

**DRAFT CZMP MAP PREPARED AS PER CRZ NOTIFICATION 2019
MAHARASHTRA STATE**

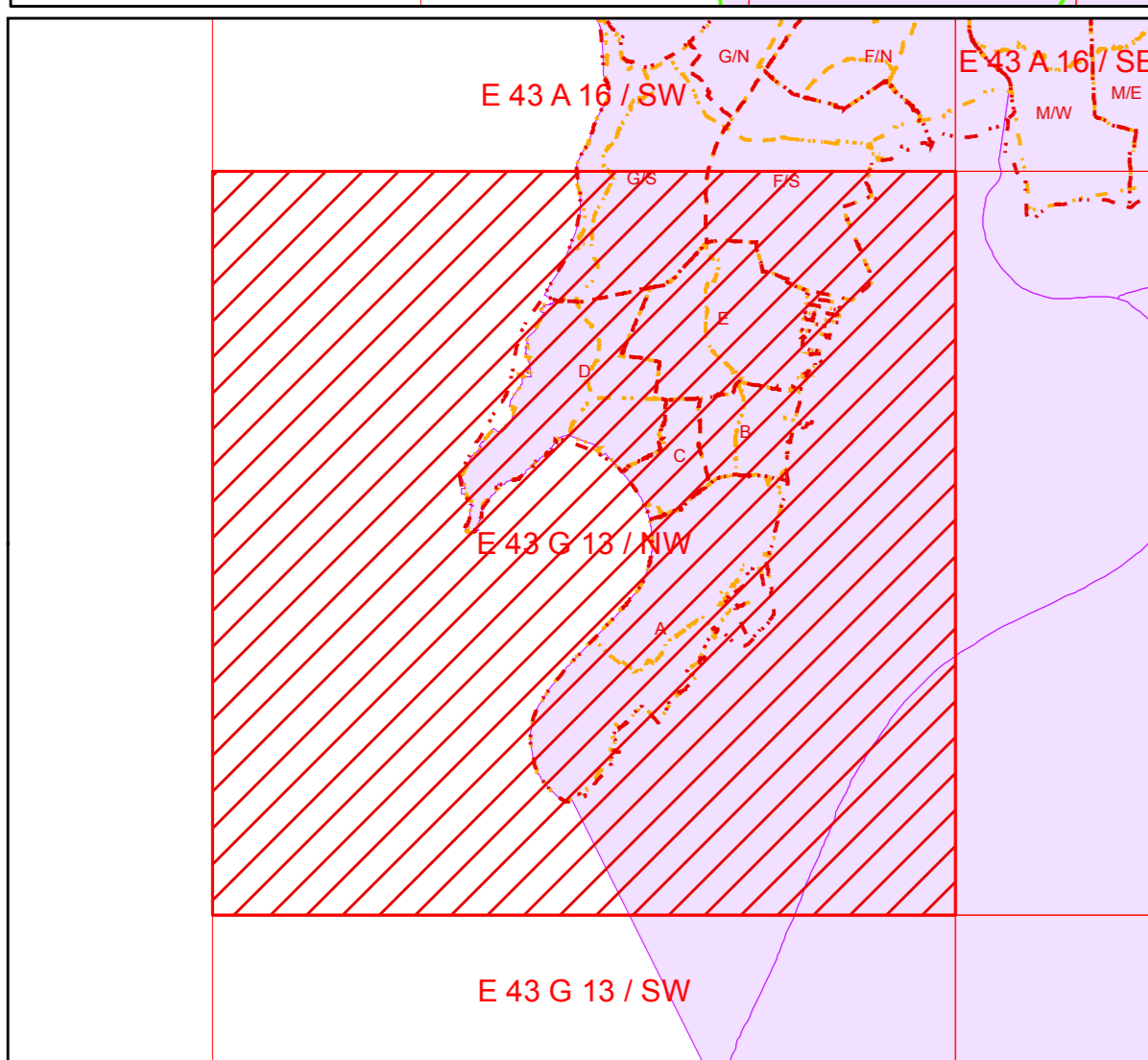
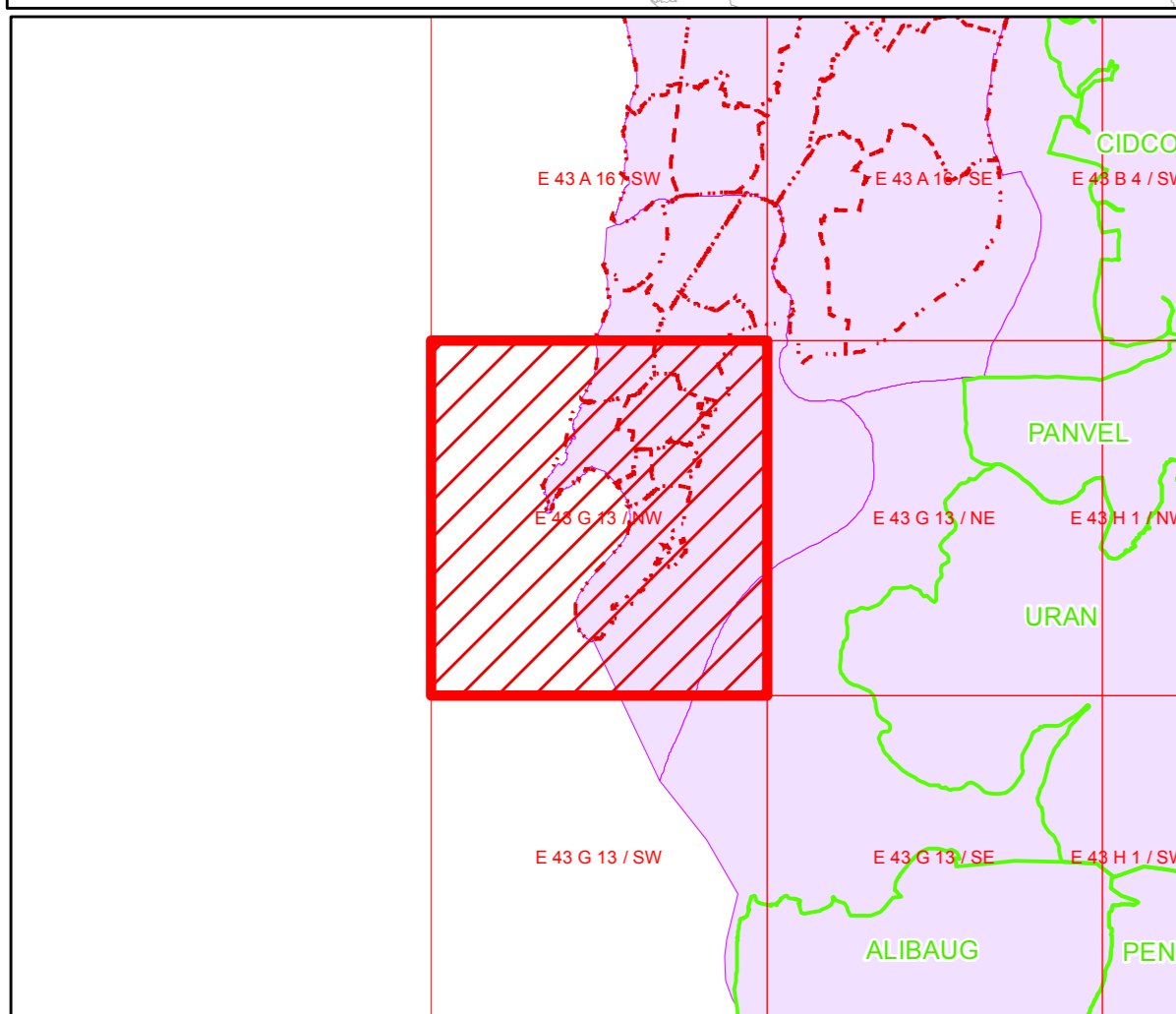
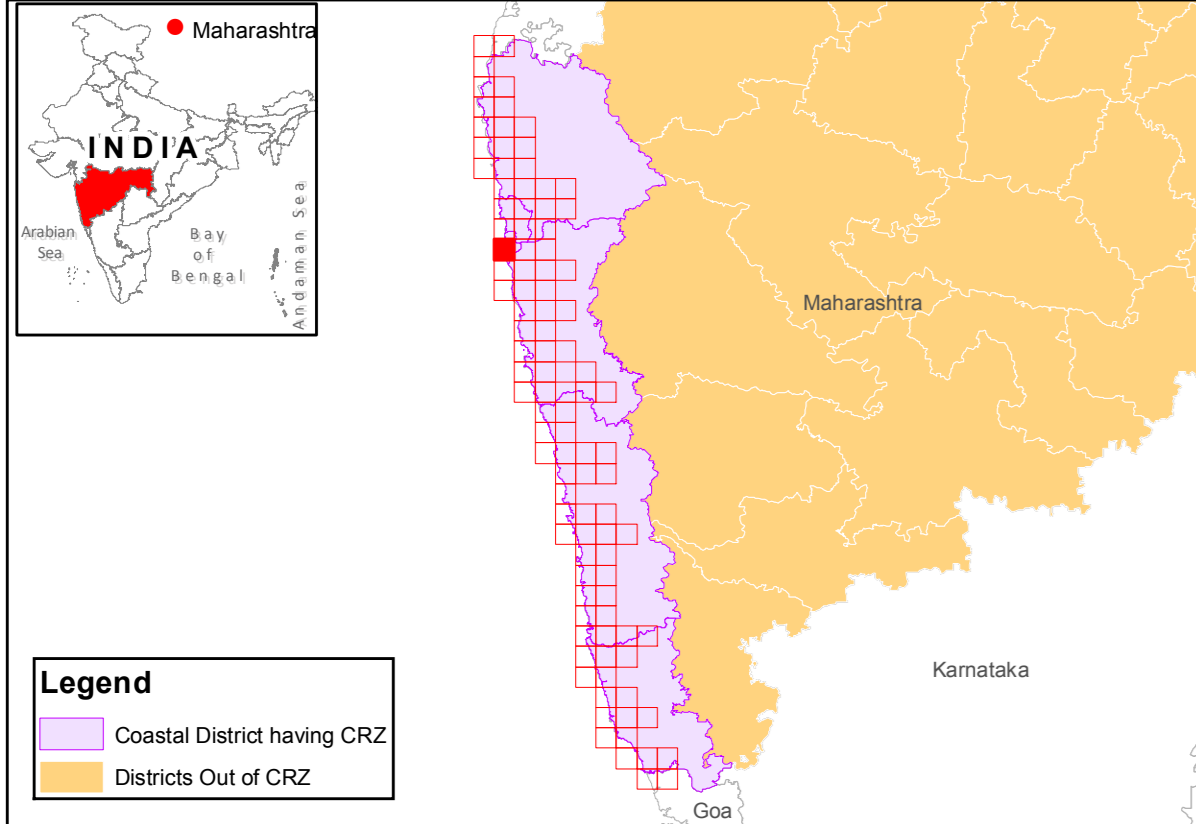
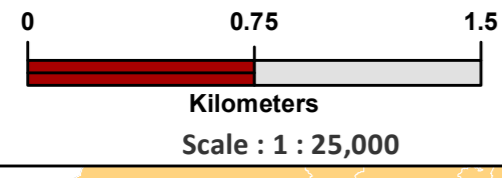
SHEET NO : E 43 G 13 / NW

Projection :- UTM Datum :- WGS 1984

NOTE:

* Open space as per Greater Mumbai Development Plan - 2034 the "Tank/Pond/Lake, Promenade, Play Ground, Garden/Park, Recreation Ground" Considered as NDZ within CRZ II

** EP proposal which are part of CRZ buffer will be as per the final Sanction by State Govt. and its development will be as per Clause 5.2 (iii) & 10.3 (i) of CRZ Notification 2019 as applicable.



Legend
Data Provided: MCZMA

- Roads
- Railway Line
- Ferry
- Bridge
- Sluice
- Ward Boundary
- Municipal or Corporation Boundary
- Survey Plots
- Taluk Boundary
- Village Boundary

Data Source: NCSCM

- ⊗ Lighthouse
- High Tide Line
- Low Tide Line
- Bund
- Seawall
- Jetty or Breakwater

CVCA

- 20m NDZ Line for Islands
- 50m CRZ Line - NDZ
- 50m CRZ line for Bay
- CRZ line for River or Creek
- 500m CRZ line

CRZ CATEGORY

CRZ - I

- Archaeological & Heritage Sites - CRZ IA
- Mangroves - CRZ IA
- 50m Mangrove buffer zone - CRZ IA
- Mudflats - CRZ IA
- Salt Marsh - CRZ IA
- Sand Dunes - CRZ IA
- Reserve Forests - CRZ IA
- Marine Protected Area - CRZ IA
- Nesting Grounds of Birds - CRZ IA
- Corals and Coral Reefs - CRZ IA
- Turtle Nesting Grounds - CRZ IA
- Intertidal Zone - CRZ IB
- Beach - CRZ IB
- Rock Outcrop - CRZ IB

CRZ - II

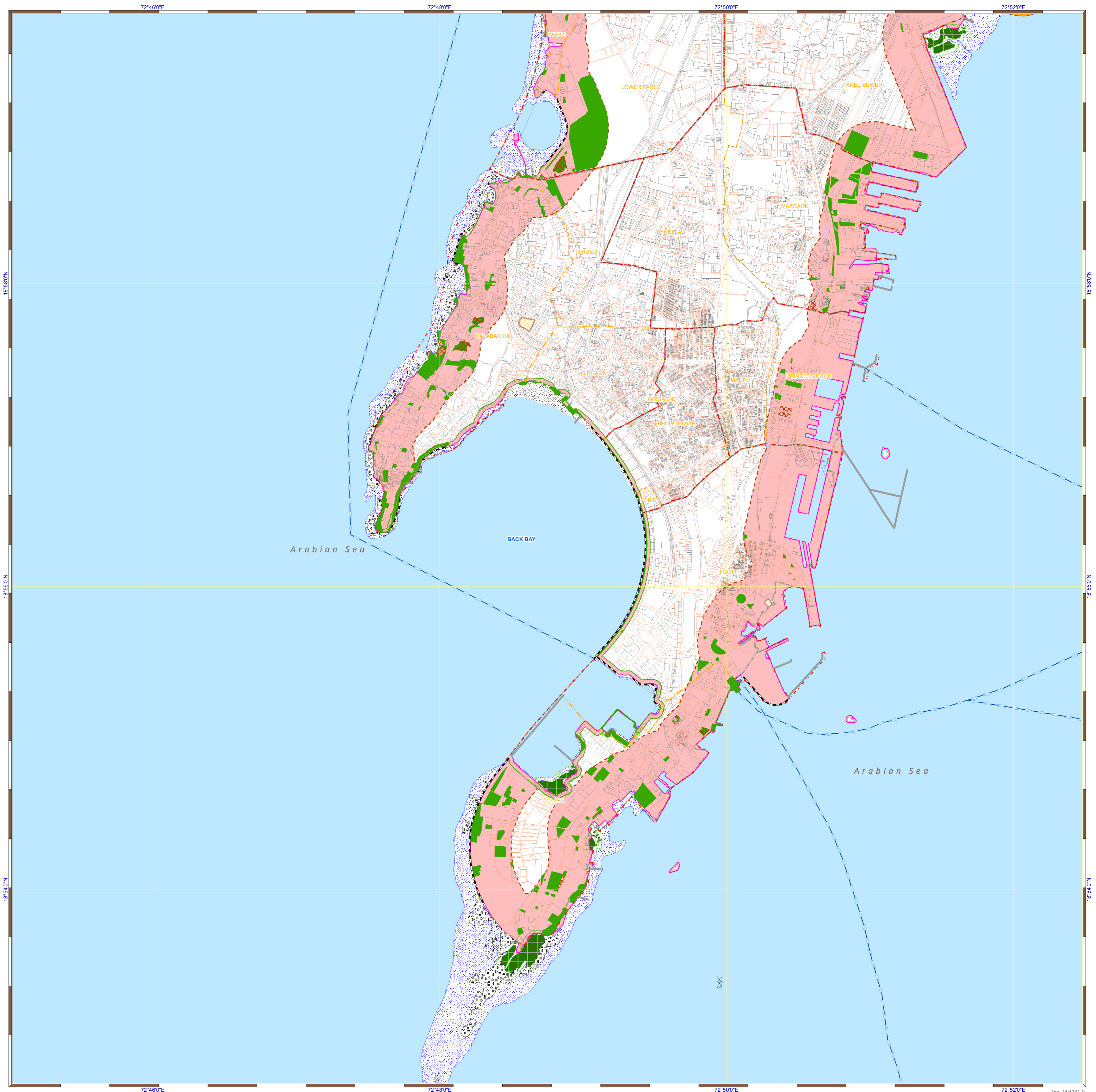
- CRZ landward of HTL - CRZ II

CRZ - III

- * NDZ - Within CRZ II
- * NDZ - Within CRZ II
- No Development Zone - NDZ
- 50 to 500m from HTL - CRZ IIIA

CRZ - IV

- Waterbody - CRZ IVA
- Waterbody - CRZ IVB



National Centre for Sustainable Coastal Management
(Ministry of Environment, Forest & Climate Change)
Chennai - 25

Prepared for
MAHARASHTRA STATE COASTAL ZONE MANAGEMENT AUTHORITY

**DRAFT CZMP MAP PREPARED AS PER CRZ NOTIFICATION 2019
MAHARASHTRA STATE**

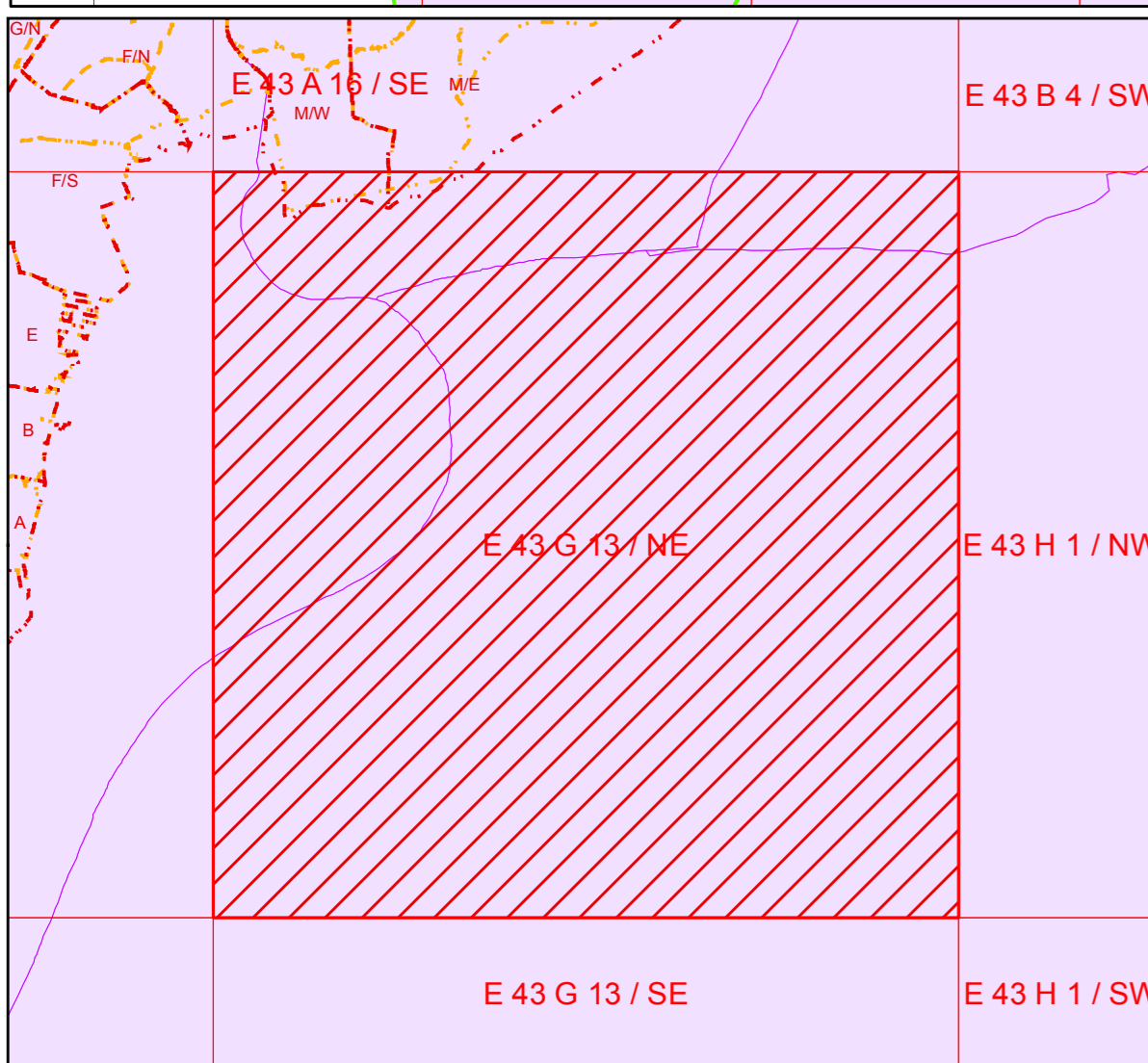
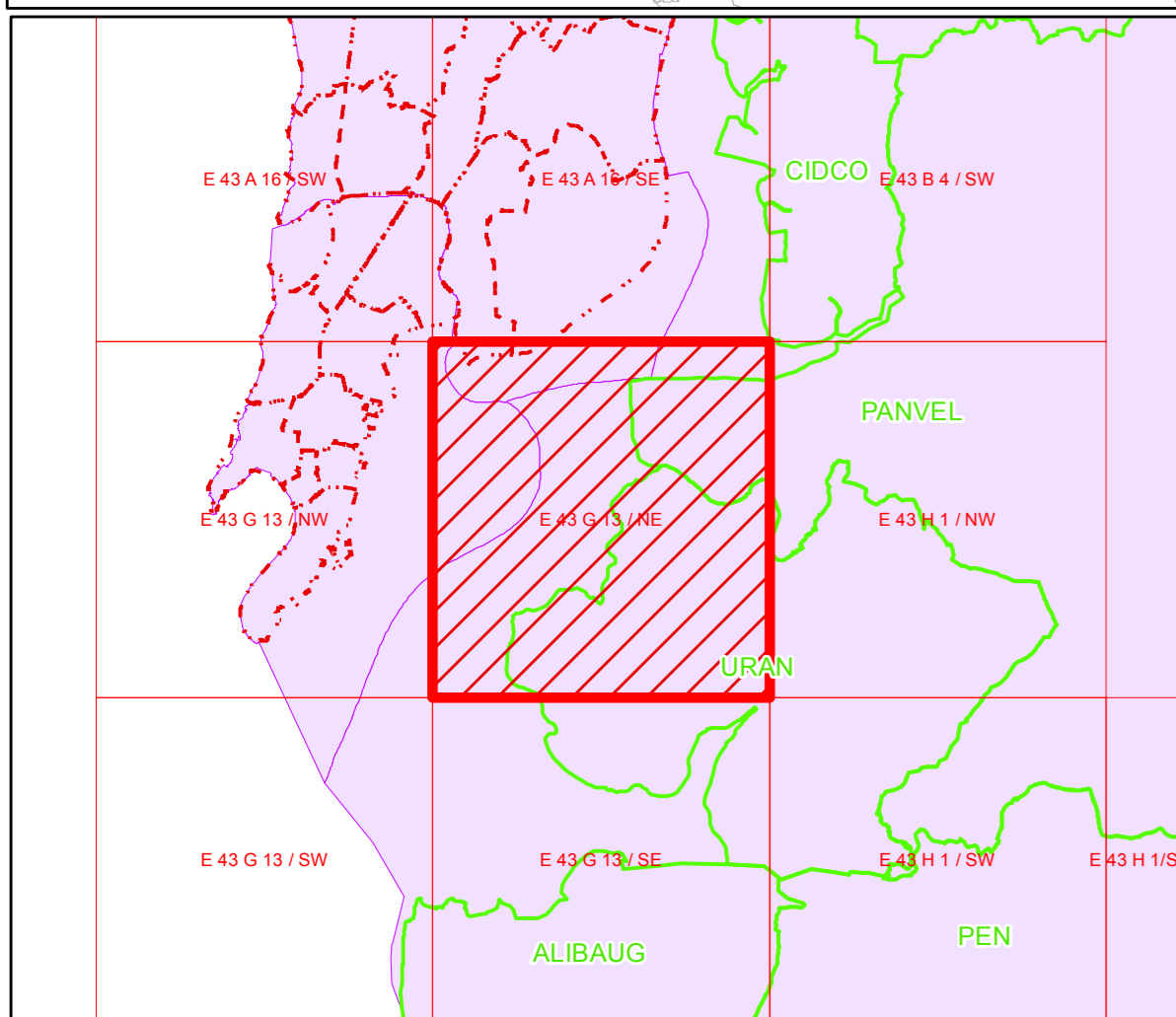
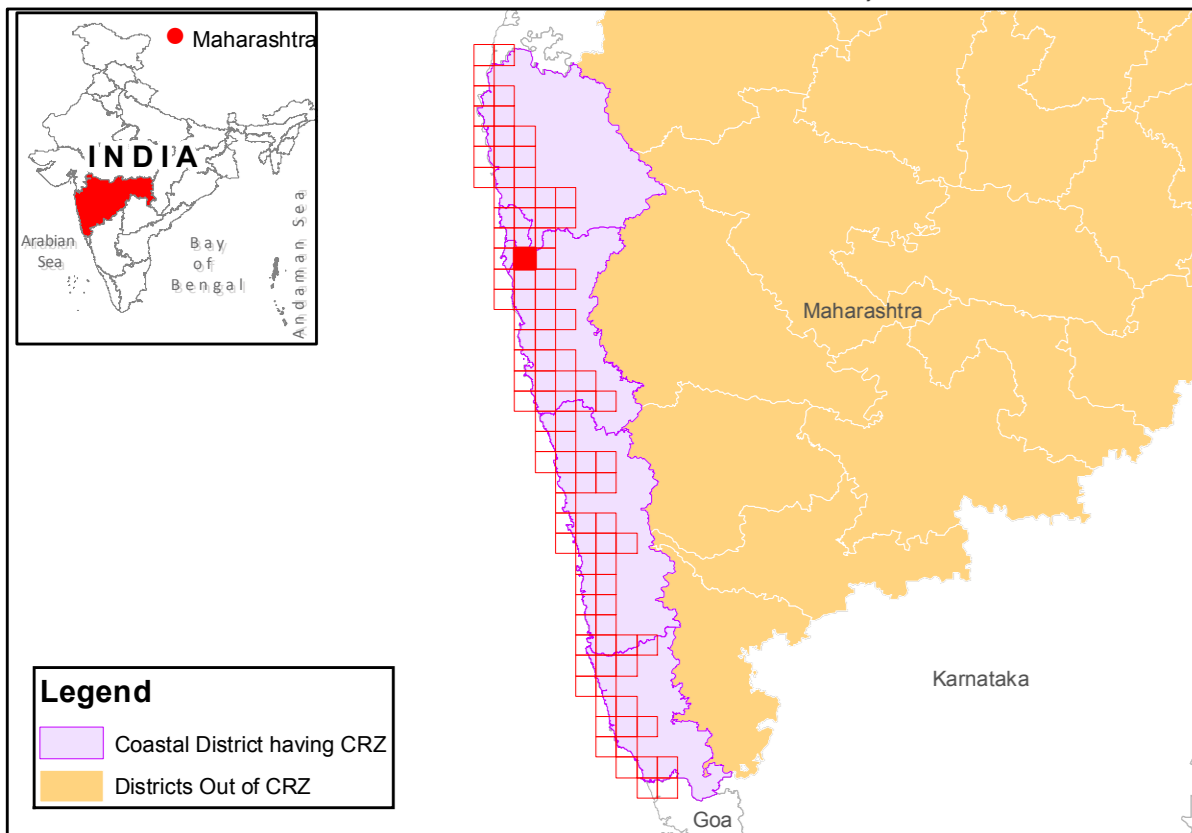
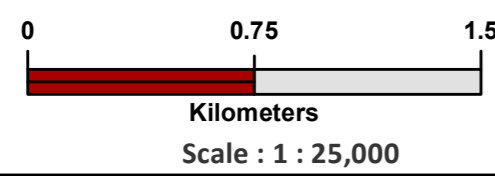
SHEET NO : E 43 G 13 / NE

Projection :- UTM Datum :- WGS 1984

NOTE:

* Open space as per Greater Mumbai Development Plan - 2034 the "Tank/Pond/Lake, Promenade, Play Ground, Garden/Park, Recreation Ground" Considered as NDZ within CRZ II

** EP proposal which are part of CRZ buffer will be as per the final Sanction by State Govt. and its development will be as per Clause 5.2 (iii) & 10.3 (i) of CRZ Notification 2019 as applicable.



Legend
Data Provided: MCZMA

- Roads
- Railway Line
- Ferry
- Bridge
- Sluice
- Ward Boundary
- Municipal or Corporation Boundary
- Survey Plots
- Taluk Boundary
- Village Boundary

Data Source: NCSCM

- ⊗ Lighthouse
- High Tide Line
- Low Tide Line
- Bund
- Seawall
- Jetty or Breakwater

CVCA

CRZ lines

- 20m NDZ Line for Islands
- 50m CRZ Line - NDZ
- 50m CRZ line for Bay
- CRZ line for River or Creek
- 500m CRZ line

CRZ CATEGORY

CRZ - I

- Archaeological & Heritage Sites - CRZ IA
- Mangroves - CRZ IA
- 50m Mangrove buffer zone - CRZ IA
- Mudflats - CRZ IA
- Salt Marsh - CRZ IA
- Sand Dunes - CRZ IA
- Reserve Forests - CRZ IA
- Marine Protected Area - CRZ IA
- Nesting Grounds of Birds - CRZ IA
- Corals and Coral Reefs - CRZ IA
- Turtle Nesting Grounds - CRZ IA
- Intertidal Zone - CRZ IB
- Beach - CRZ IB
- Rock Outcrop - CRZ IB

CRZ - II

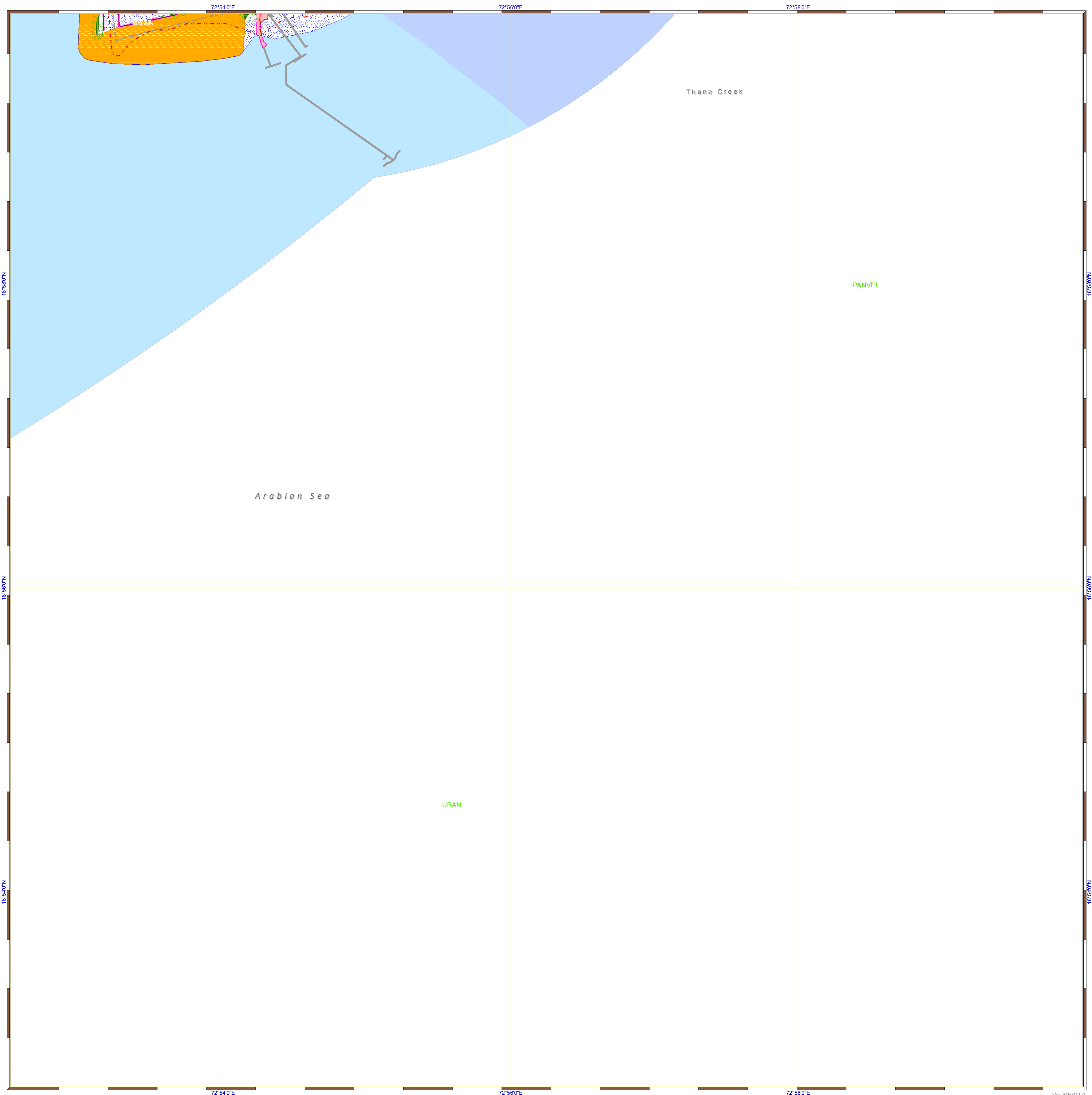
- CRZ landward of HTL - CRZ II

CRZ - III

- * NDZ - Within CRZ II
- * NDZ - Within CRZ II
- No Development Zone - NDZ
- 50 to 500m from HTL - CRZ IIIA

CRZ - IV

- Waterbody - CRZ IVA
- Waterbody - CRZ IVB



National Centre for Sustainable Coastal Management
(Ministry of Environment, Forest & Climate Change)
Chennai - 25

Prepared for
MAHARASHTRA STATE COASTAL ZONE MANAGEMENT AUTHORITY

**DRAFT CZMP MAP PREPARED AS PER CRZ NOTIFICATION 2019
MAHARASHTRA STATE**

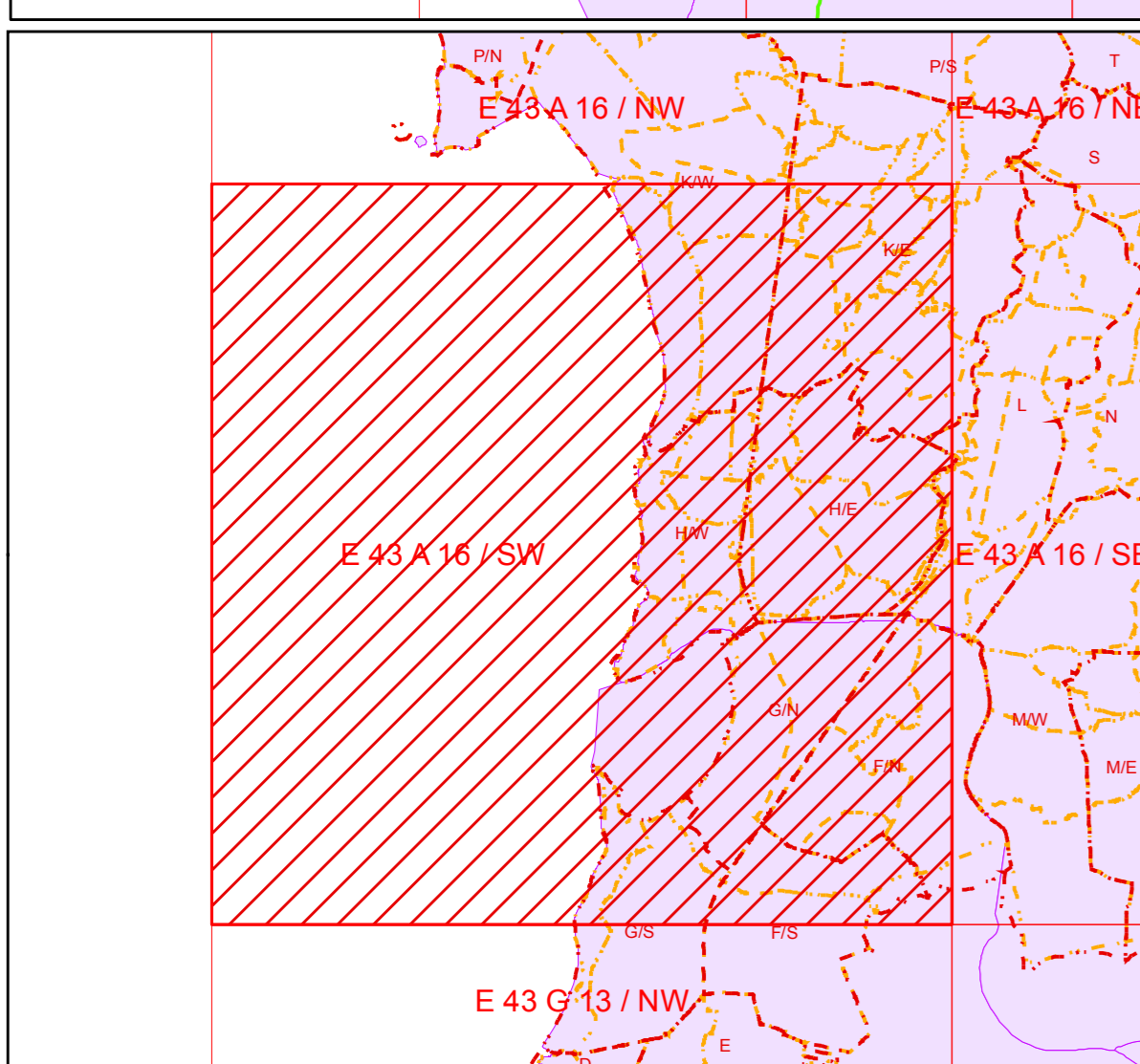
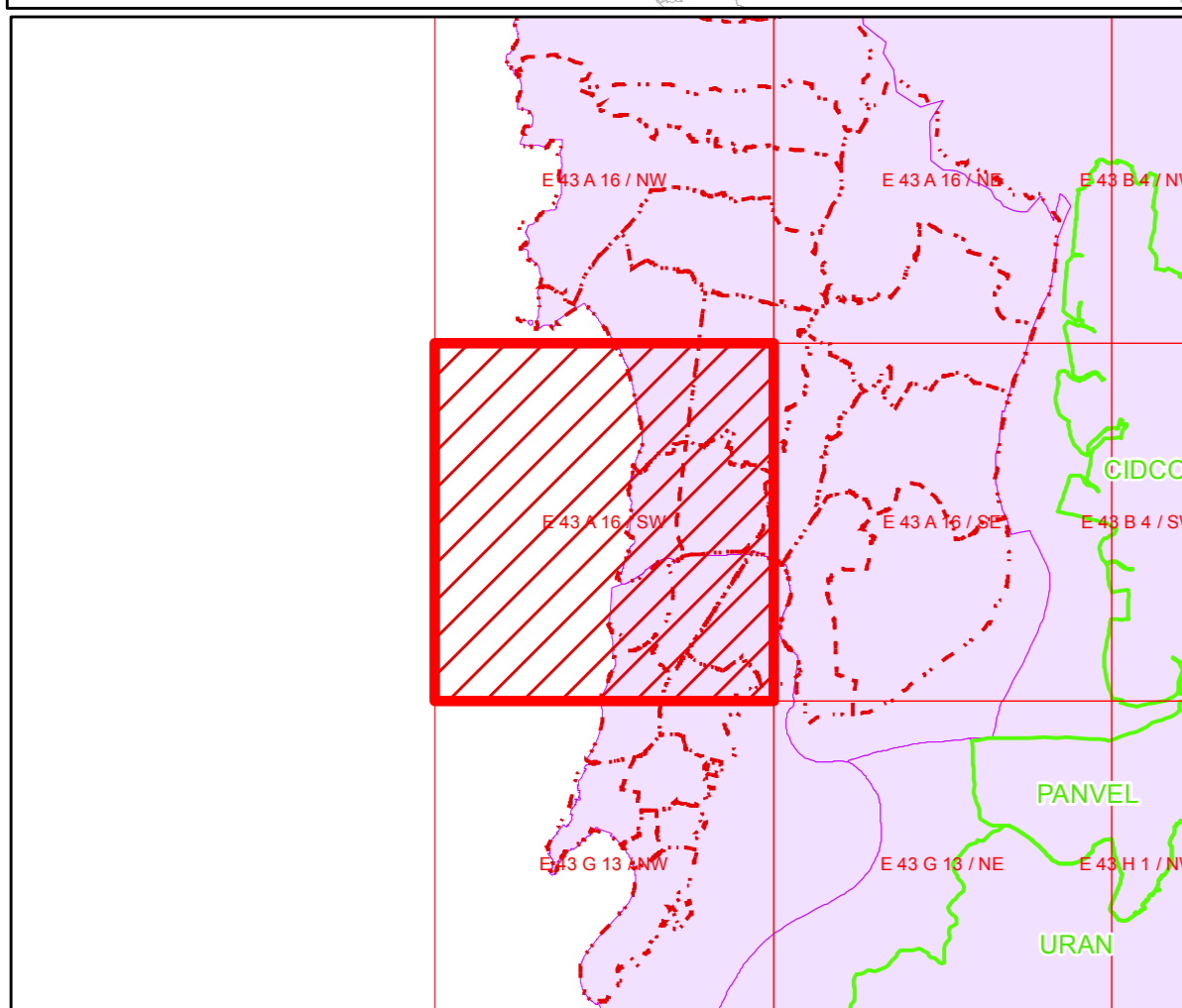
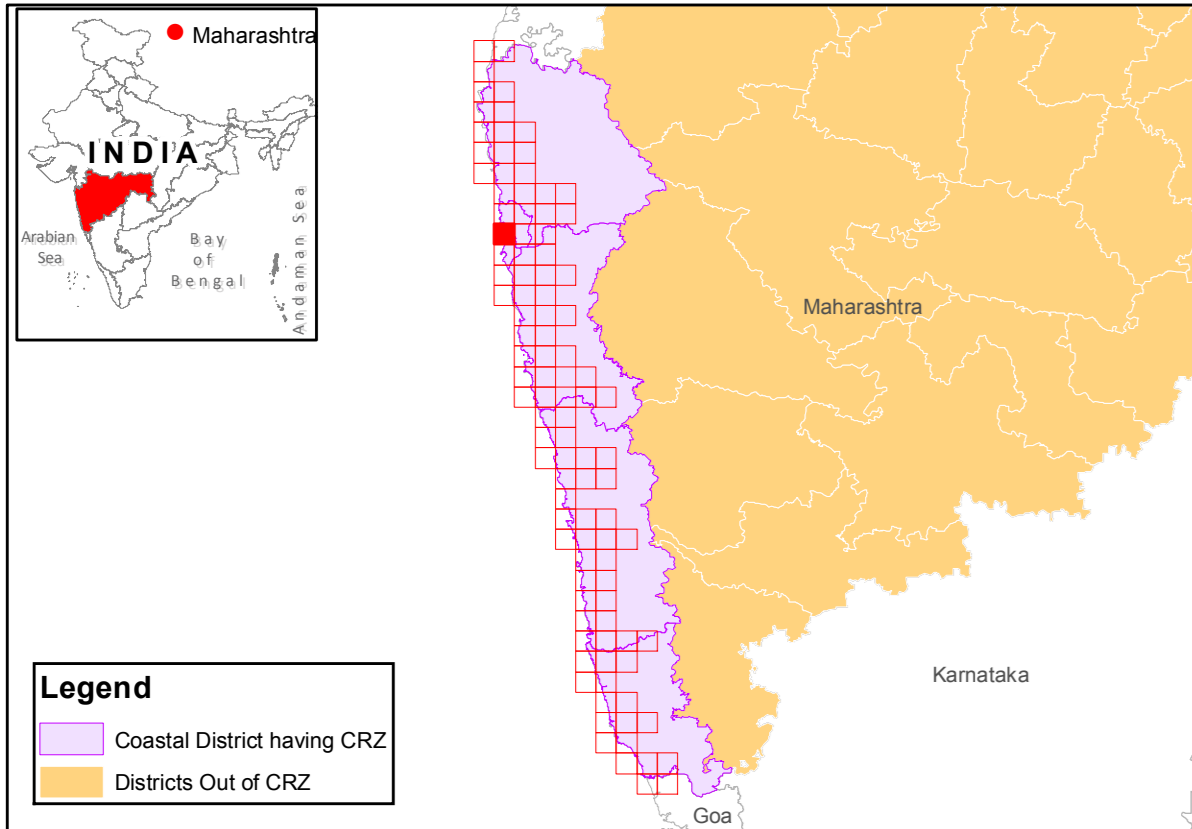
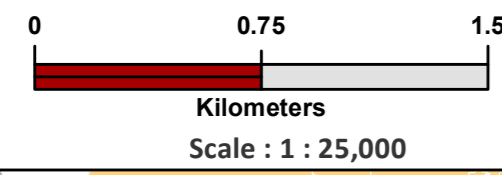
SHEET NO : E 43 A 16 / SW

Projection :- UTM Datum :- WGS 1984

NOTE:

* Open space as per Greater Mumbai Development Plan - 2034 the "Tank/Pond/Lake, Promenade, Play Ground, Garden/Park, Recreation Ground" Considered as NDZ within CRZ II

** EP proposal which are part of CRZ buffer will be as per the final Sanction by State Govt. and its development will be as per Clause 5.2 (iii) & 10.3 (i) of CRZ Notification 2019 as applicable.



Legend
Data Provided: MCZMA

- Roads
- Railway Line
- Ferry
- Bridge
- Sluice
- Ward Boundary
- Municipal or Corporation Boundary
- Survey Plots
- Taluk Boundary
- Village Boundary

Data Source: NCSCM

- ⊗ Lighthouse
- High Tide Line
- Low Tide Line
- Bund
- Seawall
- Jetty or Breakwater

CVCA

CRZ lines

- 20m NDZ Line for Islands
- 50m CRZ Line - NDZ
- 50m CRZ line for Bay
- CRZ line for River or Creek
- 500m CRZ line

CRZ CATEGORY

CRZ - I

- Archaeological & Heritage Sites - CRZ IA
- Mangroves - CRZ IA
- 50m Mangrove buffer zone - CRZ IA
- Mudflats - CRZ IA
- Salt Marsh - CRZ IA
- Sand Dunes - CRZ IA
- Reserve Forests - CRZ IA
- Marine Protected Area - CRZ IA
- Nesting Grounds of Birds - CRZ IA
- Corals and Coral Reefs - CRZ IA
- Turtle Nesting Grounds - CRZ IA
- Intertidal Zone - CRZ IB
- Beach - CRZ IB
- Rock Outcrop - CRZ IB

CRZ - II

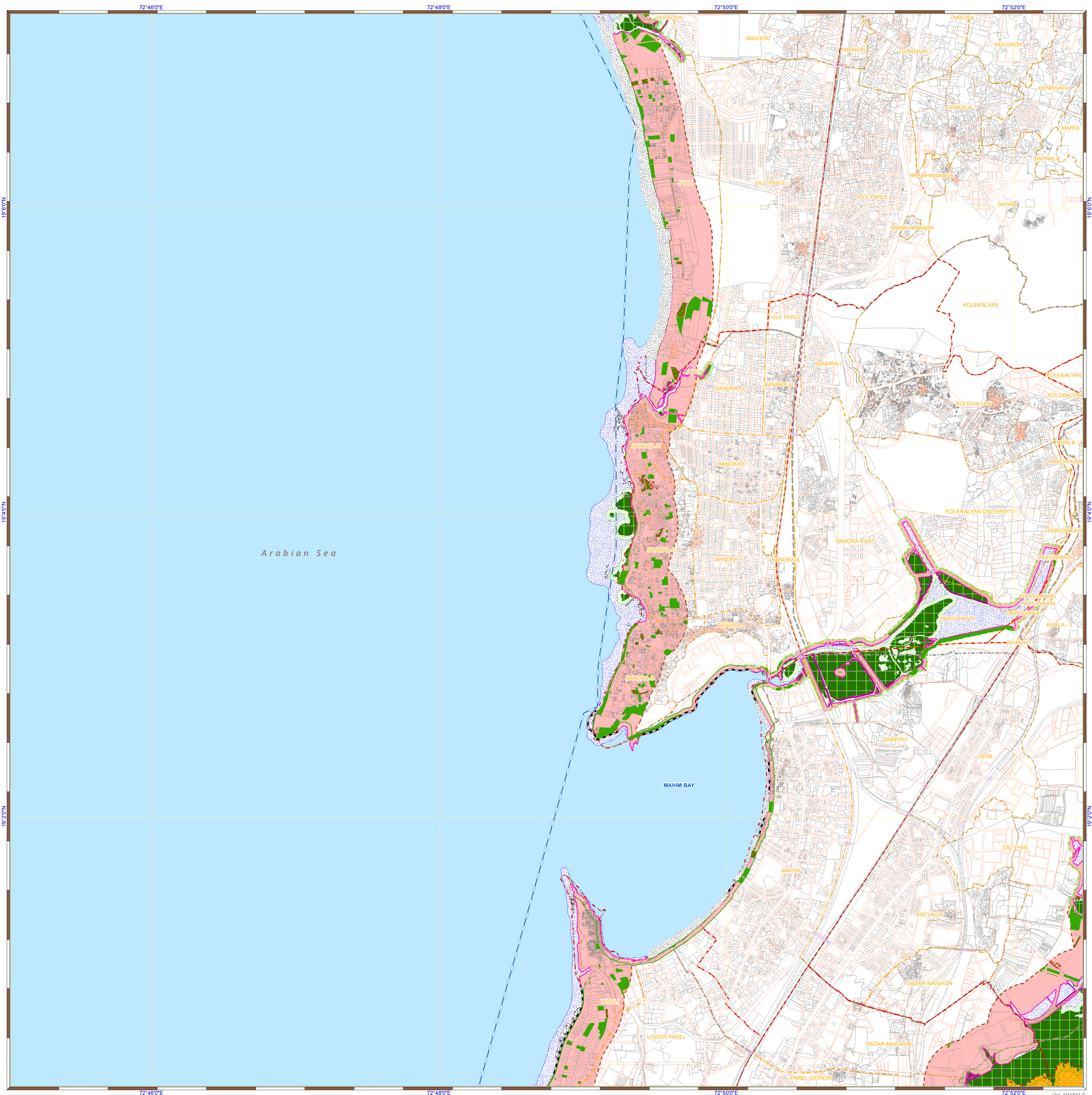
- CRZ landward of HTL - CRZ II

CRZ - III

- * NDZ - Within CRZ II
- * NDZ - Within CRZ II
- No Development Zone - NDZ
- 50 to 500m from HTL - CRZ IIIA

CRZ - IV

- Waterbody - CRZ IVA
- Waterbody - CRZ IVB



Prepared by
NCSCM
National Centre for Sustainable Coastal Management
(Ministry of Environment, Forest & Climate Change)
Chennai - 25

Prepared for
MAHARASHTRA STATE COASTAL ZONE MANAGEMENT AUTHORITY

**DRAFT CZMP MAP PREPARED AS PER CRZ NOTIFICATION 2019
MAHARASHTRA STATE**

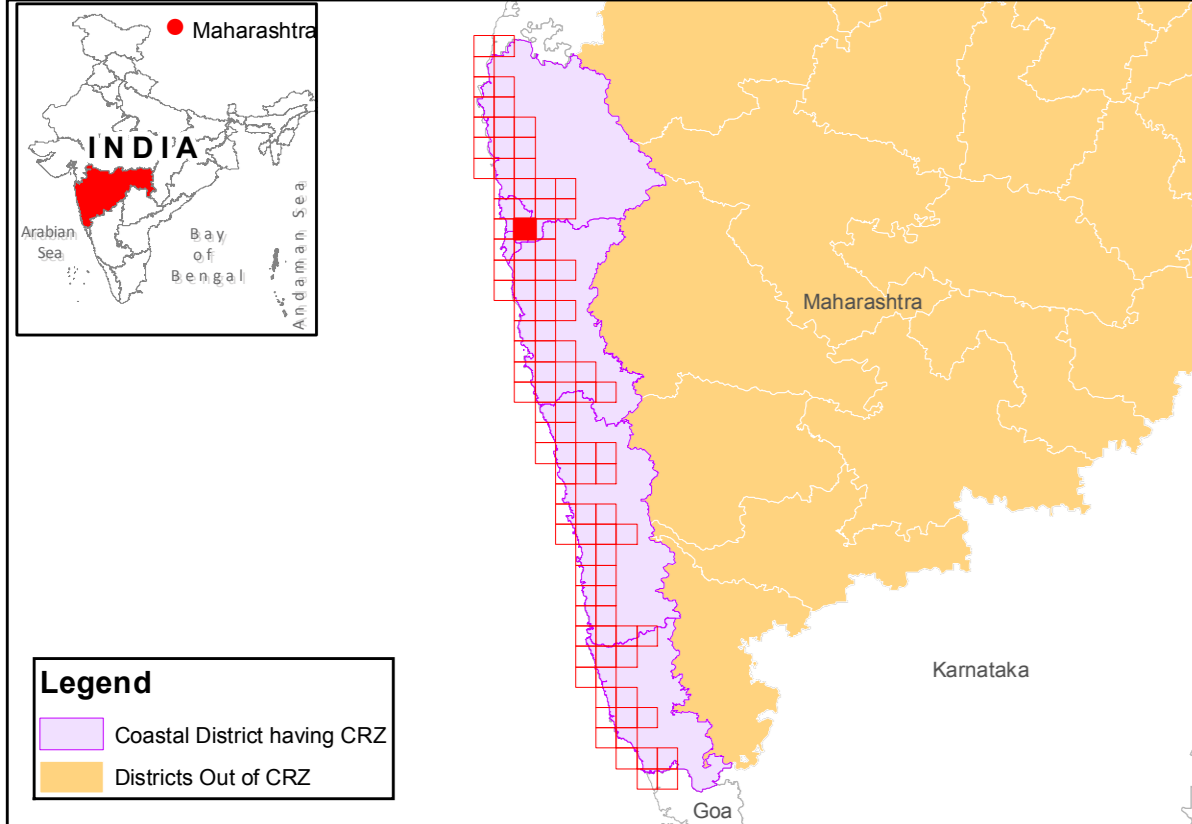
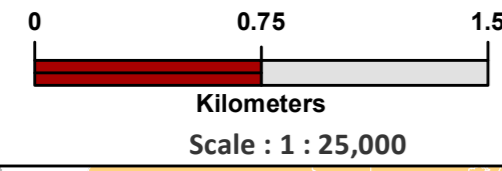
SHEET NO : E 43 A 16 / SE

Projection :- UTM Datum :- WGS 1984

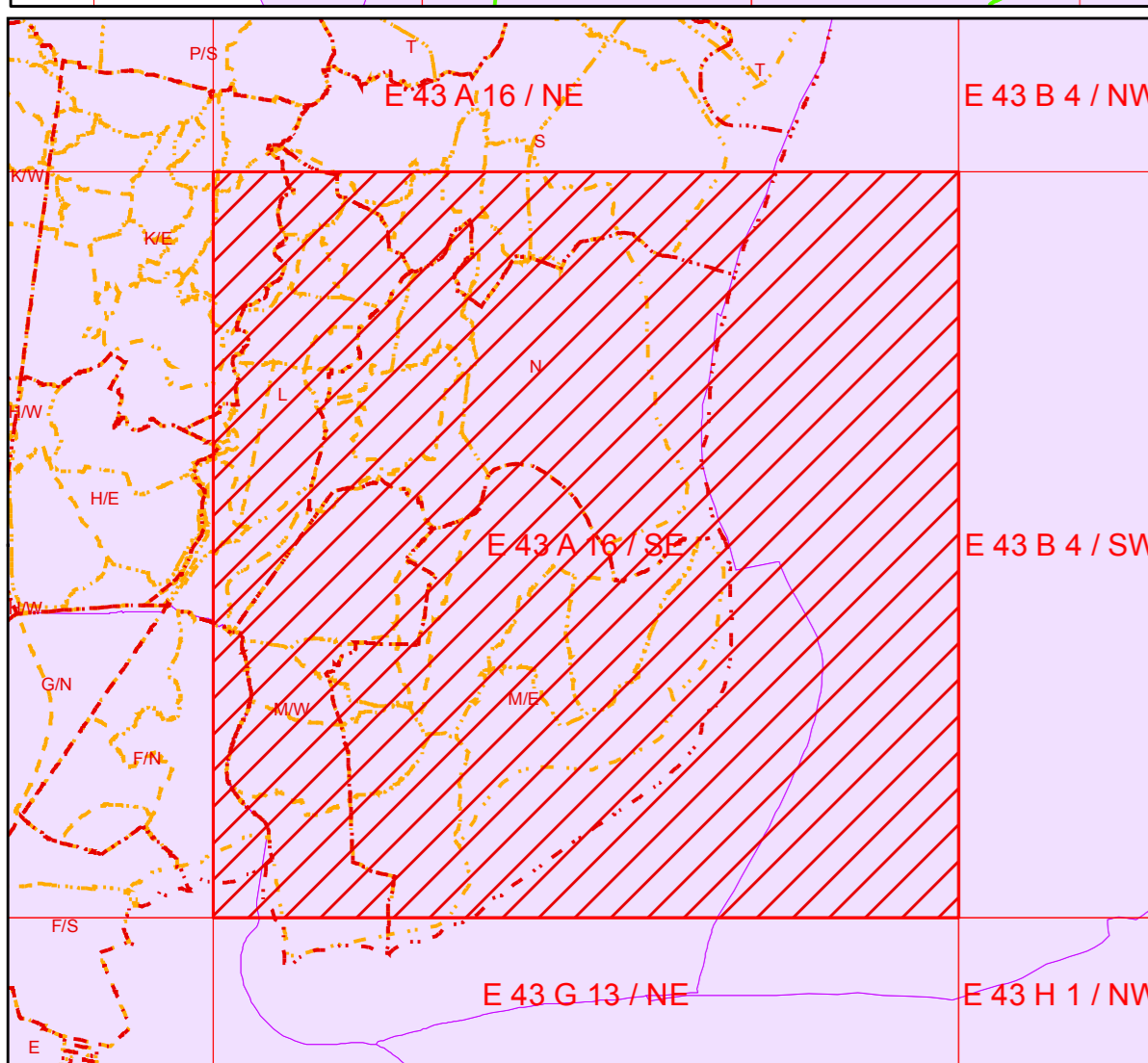
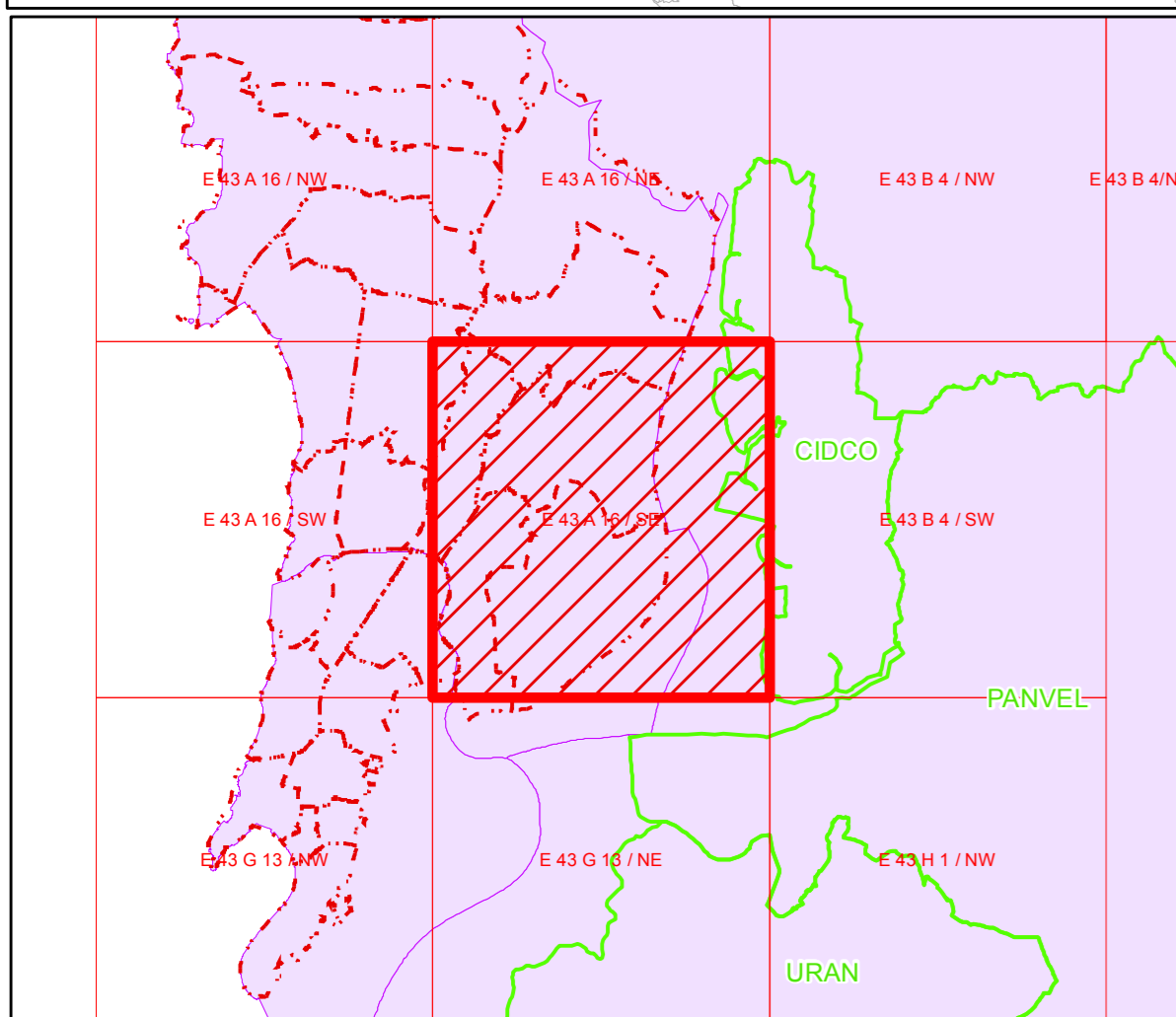
NOTE:

* Open space as per Greater Mumbai Development Plan - 2034 the "Tank/Pond/Lake, Promenade, Play Ground, Garden/Park, Recreation Ground" Considered as NDZ within CRZ II

** EP proposal which are part of CRZ buffer will be as per the final Sanction by State Govt. and its development will be as per Clause 5.2 (iii) & 10.3 (i) of CRZ Notification 2019 as applicable.



Legend
 Coastal District having CRZ
 Districts Out of CRZ



Legend
Data Provided: MCZMA

- Roads
- Railway Line
- Ferry
- Bridge
- Sluice
- Ward Boundary
- Municipal or Corporation Boundary
- Survey Plots
- Taluk Boundary
- Village Boundary

Data Source: NCSCM

- Lighthouse
- High Tide Line
- Low Tide Line
- Bund
- Seawall
- Jetty or Breakwater

CVCA

- CRZ lines**
- 20m NDZ Line for Islands
 - 50m CRZ Line - NDZ
 - 50m CRZ line for Bay
 - CRZ line for River or Creek
 - 500m CRZ line

CRZ CATEGORY

CRZ - I

- Archaeological & Heritage Sites - CRZ IA
- Mangroves - CRZ IA
- 50m Mangrove buffer zone - CRZ IA
- Mudflats - CRZ IA
- Salt Marsh - CRZ IA
- Sand Dunes - CRZ IA
- Reserve Forests - CRZ IA
- Marine Protected Area - CRZ IA
- Nesting Grounds of Birds - CRZ IA
- Corals and Coral Reefs - CRZ IA
- Turtle Nesting Grounds - CRZ IA
- Intertidal Zone - CRZ IB
- Beach - CRZ IB
- Rock Outcrop - CRZ IB

CRZ - II

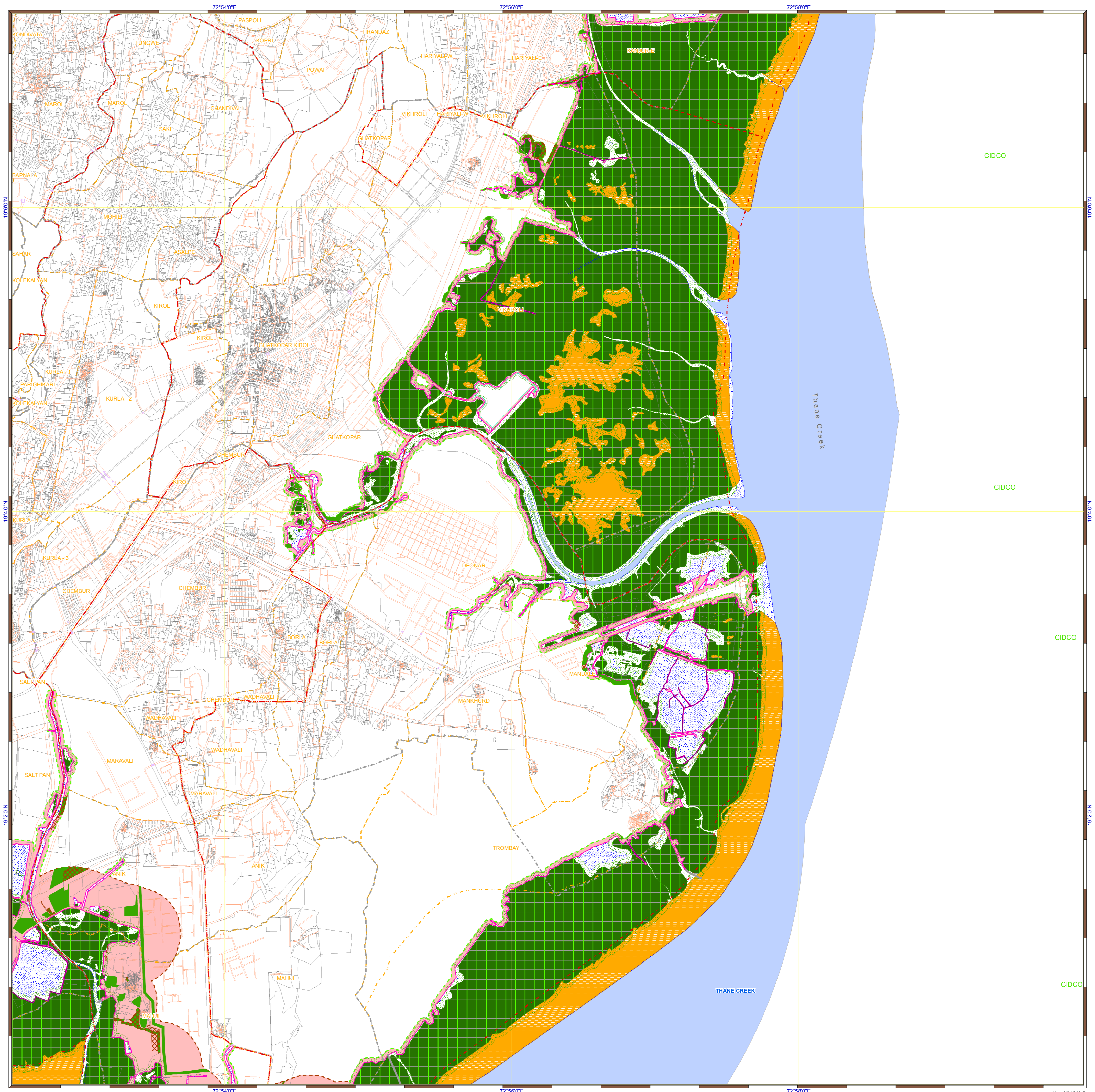
- CRZ landward of HTL - CRZ II

CRZ - III

- NDZ - Within CRZ II
- NDZ - Within CRZ II
- No Development Zone - NDZ
- 50 to 500m from HTL - CRZ IIIA

CRZ - IV

- Waterbody - CRZ IVA
- Waterbody - CRZ IVB



National Centre for Sustainable Coastal Management
(Ministry of Environment, Forest & Climate Change)
Chennai - 25

Prepared for
MAHARASHTRA STATE COASTAL ZONE MANAGEMENT AUTHORITY

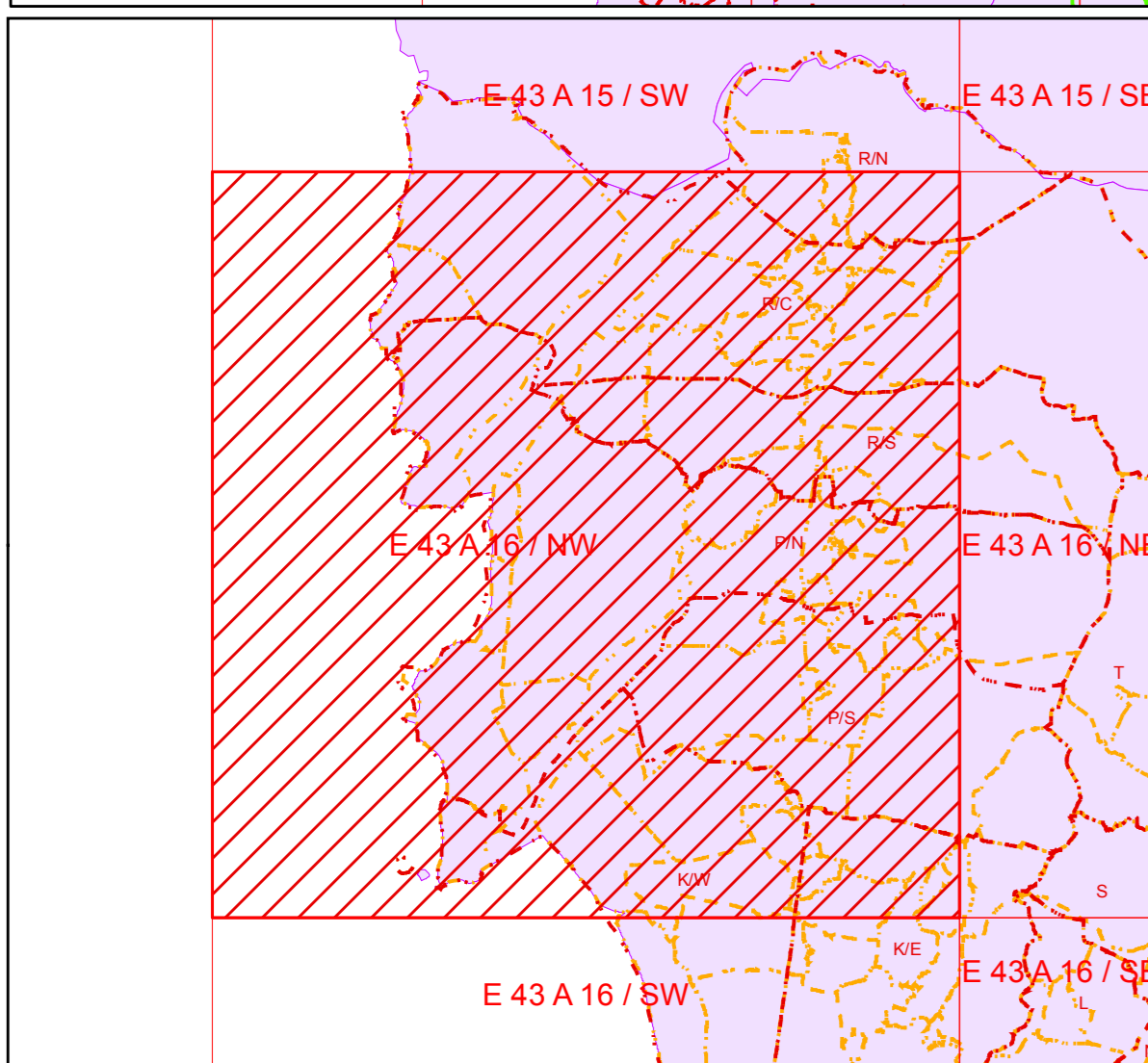
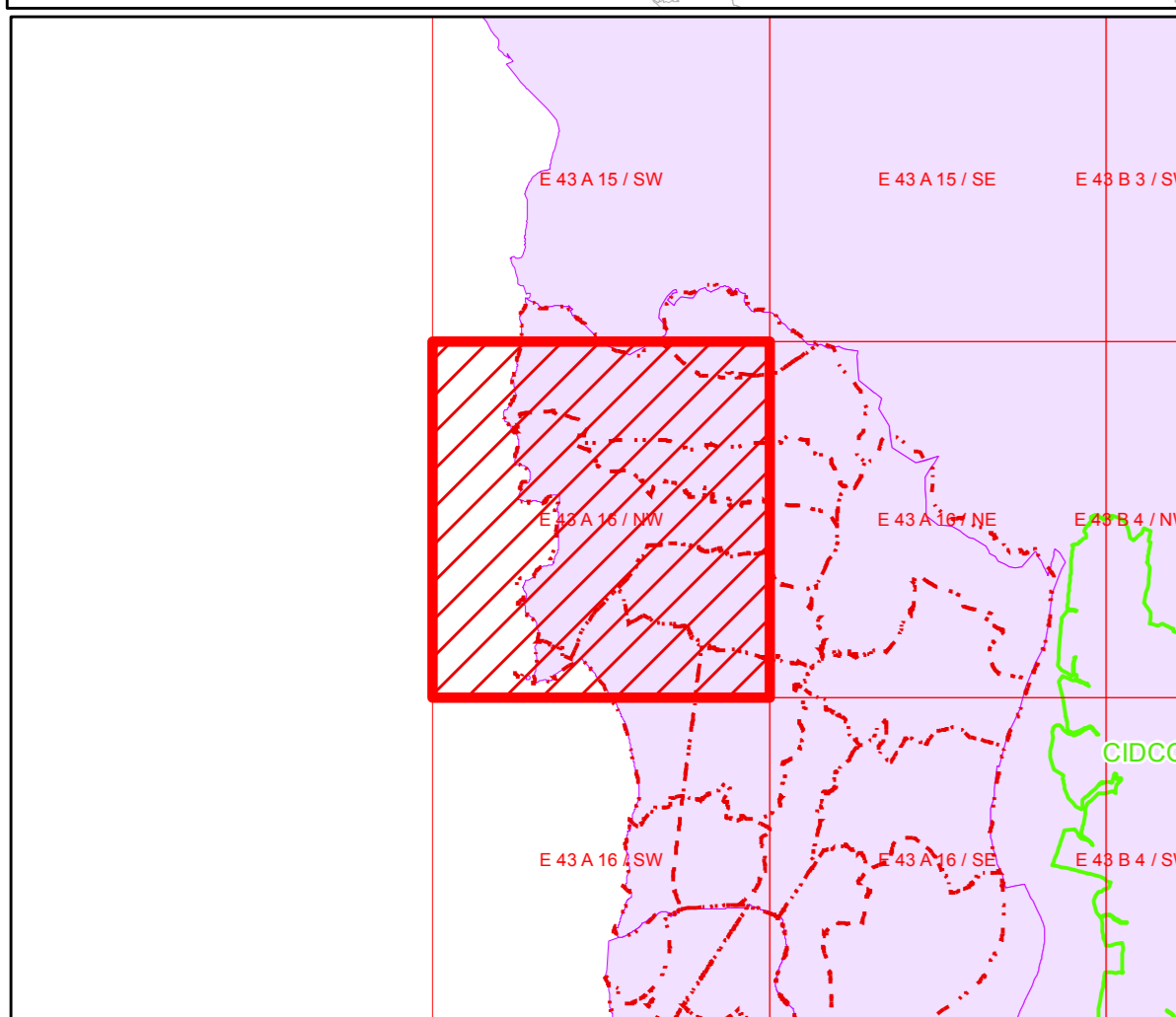
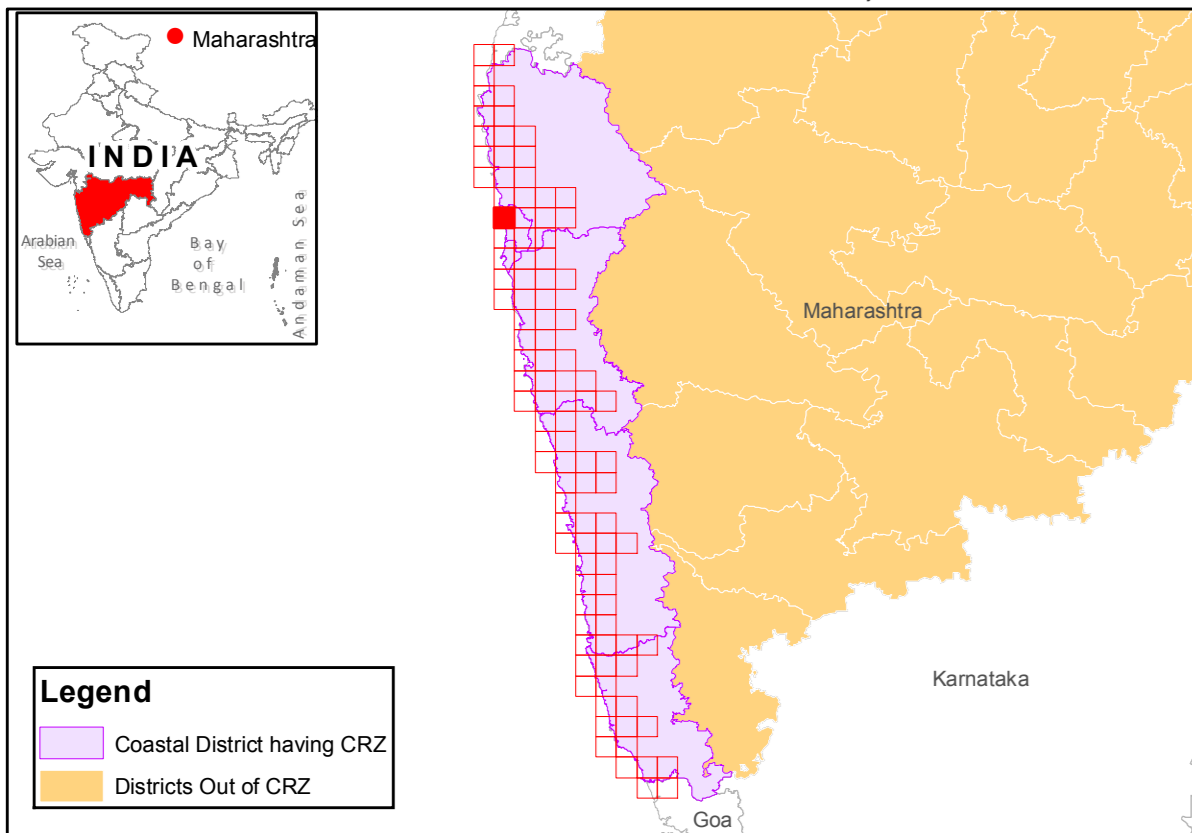
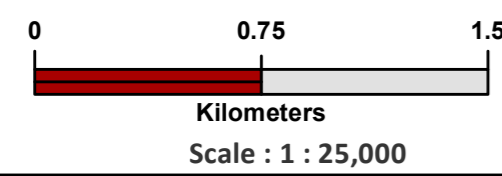
**DRAFT CZMP MAP PREPARED AS PER CRZ NOTIFICATION 2019
MAHARASHTRA STATE**

SHEET NO : E 43 A 16 / NW

Projection :- UTM Datum :- WGS 1984

NOTE:

* Open space as per Greater Mumbai Development Plan - 2034 the "Tank/Pond/Lake, Promenade, Play Ground, Garden/Park, Recreation Ground" Considered as NDZ within CRZ II
** EP proposal which are part of CRZ buffer will be as per the final Sanction by State Govt. and its development will be as per Clause 5.2 (iii) & 10.3 (i) of CRZ Notification 2019 as applicable.



Legend
Data Provided: MCZMA

- Roads
- Railway Line
- Ferry
- Bridge
- Sluice
- Ward Boundary
- Municipal or Corporation Boundary
- Survey Plots
- Taluk Boundary
- Village Boundary

Data Source: NCSCM

- ⊗ Lighthouse
- High Tide Line
- Low Tide Line
- Bund
- Seawall
- Jetty or Breakwater

CVCA

CRZ lines

- 20m NDZ Line for Islands
- 50m CRZ Line - NDZ
- 50m CRZ line for Bay
- CRZ line for River or Creek
- 500m CRZ line

CRZ CATEGORY

CRZ - I

- Archaeological & Heritage Sites - CRZ IA
- Mangroves - CRZ IA
- 50m Mangrove buffer zone - CRZ IA
- Mudflats - CRZ IA
- Salt Marsh - CRZ IA
- Sand Dunes - CRZ IA
- Reserve Forests - CRZ IA
- Marine Protected Area - CRZ IA
- Nesting Grounds of Birds - CRZ IA
- Corals and Coral Reefs - CRZ IA
- Turtle Nesting Grounds - CRZ IA
- Intertidal Zone - CRZ IB
- Beach - CRZ IB
- Rock Outcrop - CRZ IB

CRZ - II

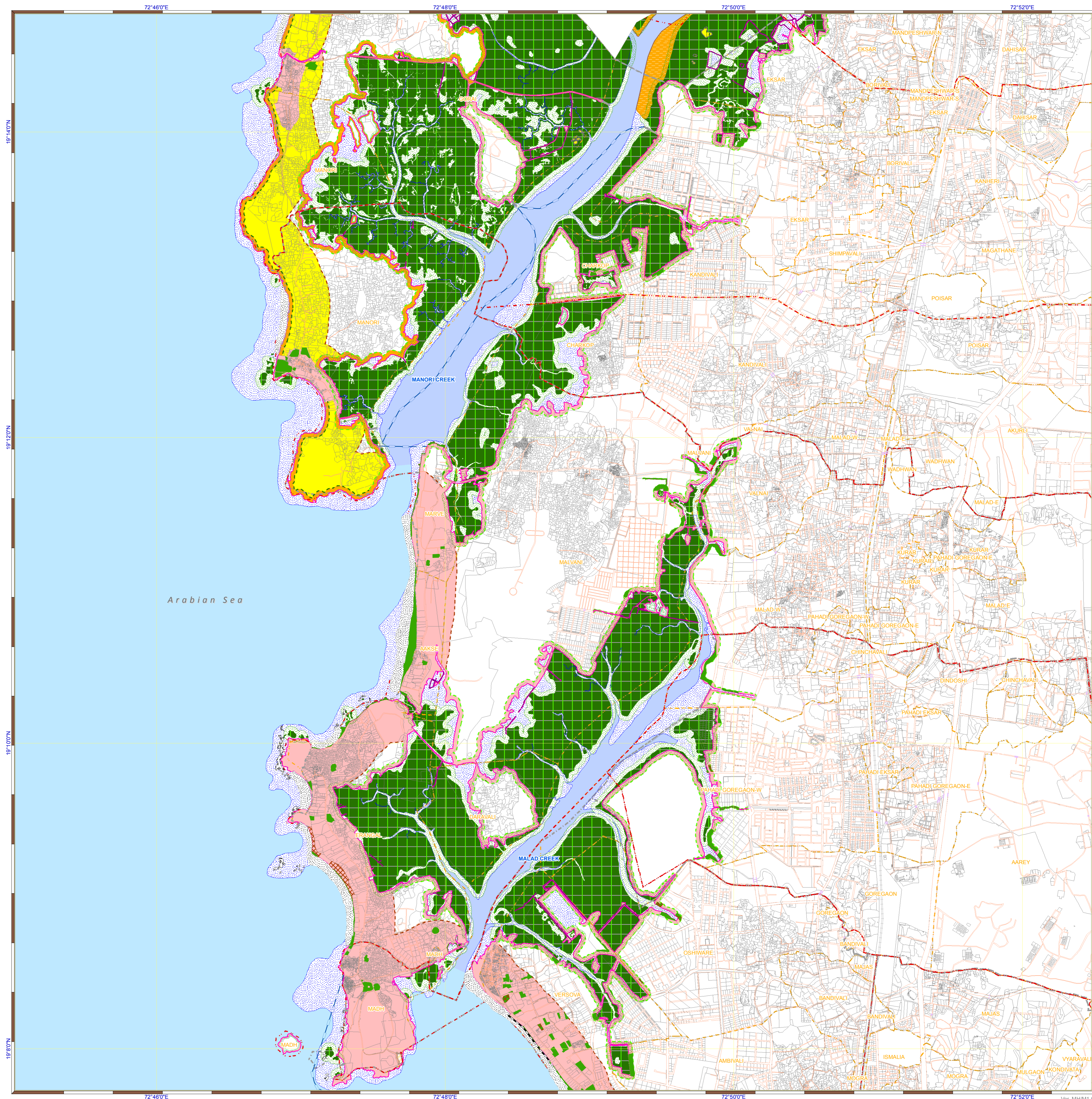
- CRZ landward of HTL - CRZ II

CRZ - III

- NDZ - Within CRZ II
- NDZ - Within CRZ II
- No Development Zone - NDZ
- 50 to 500m from HTL - CRZ IIIA

CRZ - IV

- Waterbody - CRZ IVA
- Waterbody - CRZ IVB



Prepared by
NCSCM
National Centre for Sustainable Coastal Management
(Ministry of Environment, Forest & Climate Change)
Chennai - 25

Prepared for
MAHARASHTRA STATE COASTAL ZONE MANAGEMENT AUTHORITY

**DRAFT CZMP MAP PREPARED AS PER CRZ NOTIFICATION 2019
MAHARASHTRA STATE**

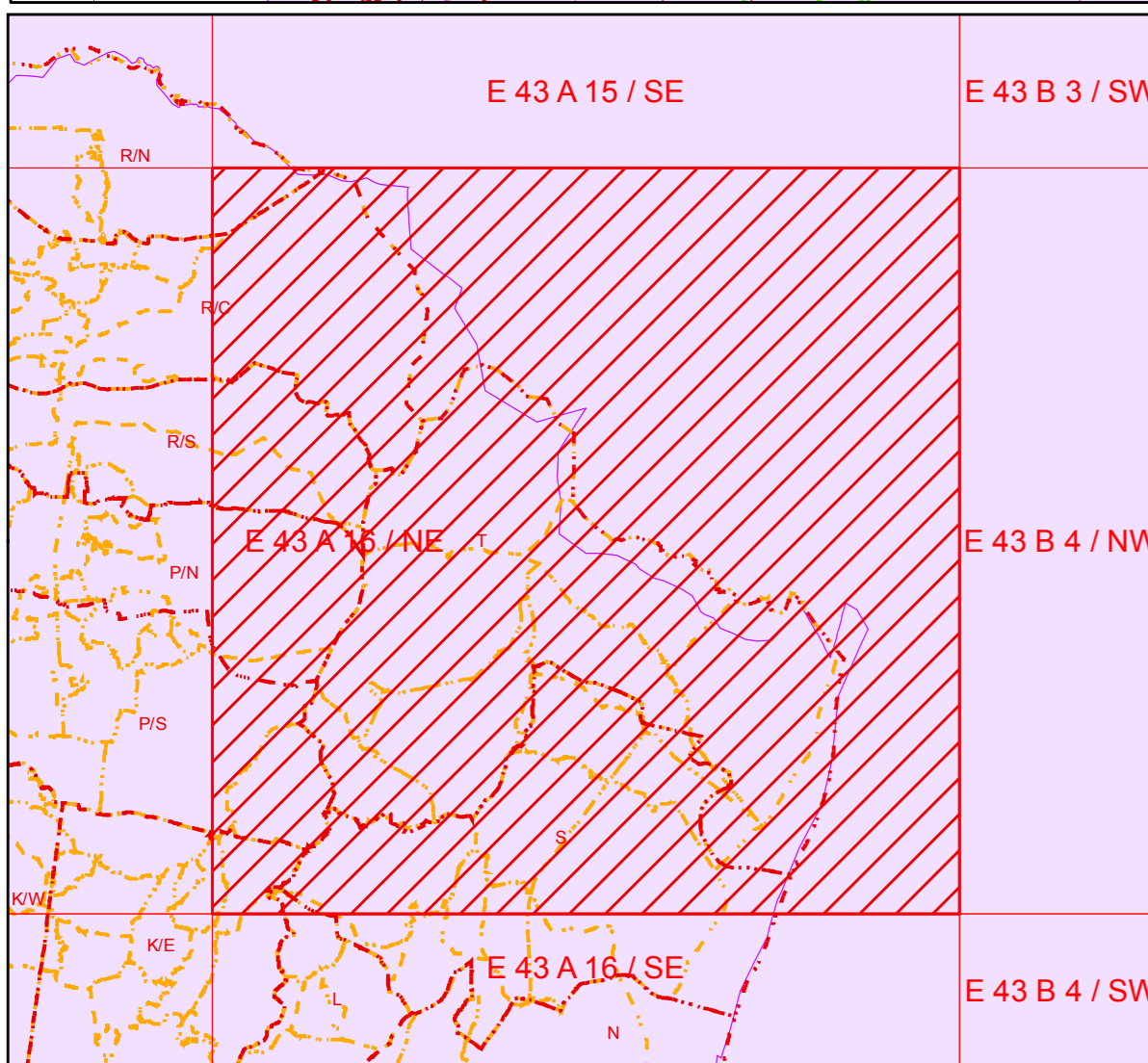
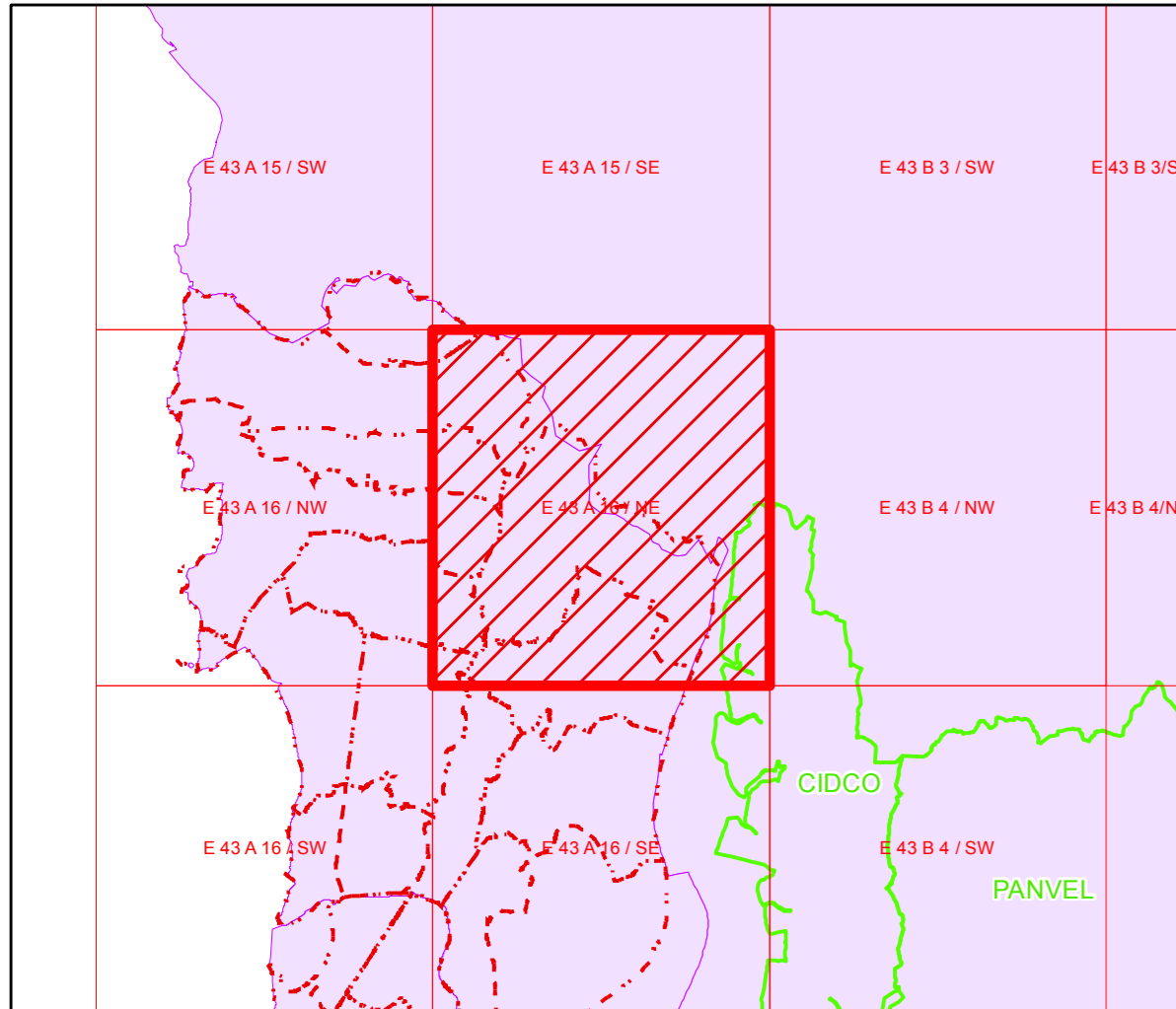
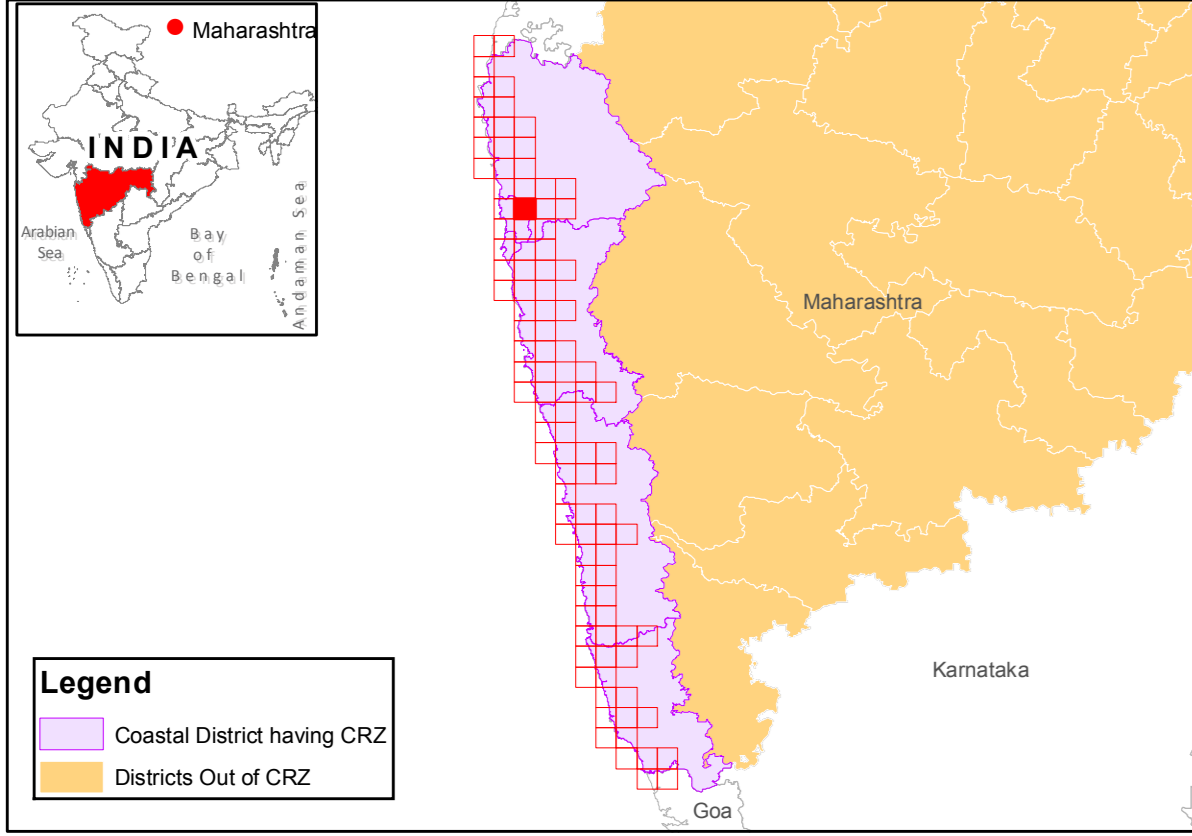
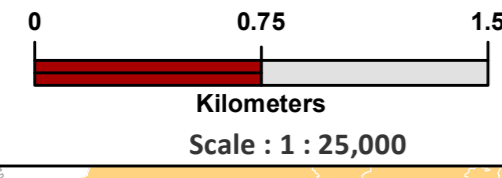
SHEET NO : E 43 A 16 / NE

Projection :- UTM Datum :- WGS 1984

NOTE:

* Open space as per Greater Mumbai Development Plan - 2034 the "Tank/Pond/Lake, Promenade, Play Ground, Garden/Park, Recreation Ground" Considered as NDZ within CRZ II

** EP proposal which are part of CRZ buffer will be as per the final Sanction by State Govt. and its development will be as per Clause 5.2 (iii) & 10.3 (i) of CRZ Notification 2019 as applicable.



Legend
Data Provided: MCZMA

- Roads
- Railway Line
- Ferry
- Bridge
- Sluice
- Ward Boundary
- Municipal or Corporation Boundary
- Survey Plots
- Taluk Boundary
- Village Boundary

Data Source: NCSCM

- ⊗ Lighthouse
- High Tide Line
- Low Tide Line
- Bund
- Seawall
- Jetty or Breakwater

CVCA

CRZ lines

- 20m NDZ Line for Islands
- 50m CRZ Line - NDZ
- 50m CRZ line for Bay
- CRZ line for River or Creek
- 500m CRZ line

CRZ CATEGORY

CRZ - I

- Archaeological & Heritage Sites - CRZ IA
- Mangroves - CRZ IA
- 50m Mangrove buffer zone - CRZ IA
- Mudflats - CRZ IA
- Salt Marsh - CRZ IA
- Sand Dunes - CRZ IA
- Reserve Forests - CRZ IA
- Marine Protected Area - CRZ IA
- Nesting Grounds of Birds - CRZ IA
- Corals and Coral Reefs - CRZ IA
- Turtle Nesting Grounds - CRZ IA
- Intertidal Zone - CRZ IB
- Beach - CRZ IB
- Rock Outcrop - CRZ IB

CRZ - II

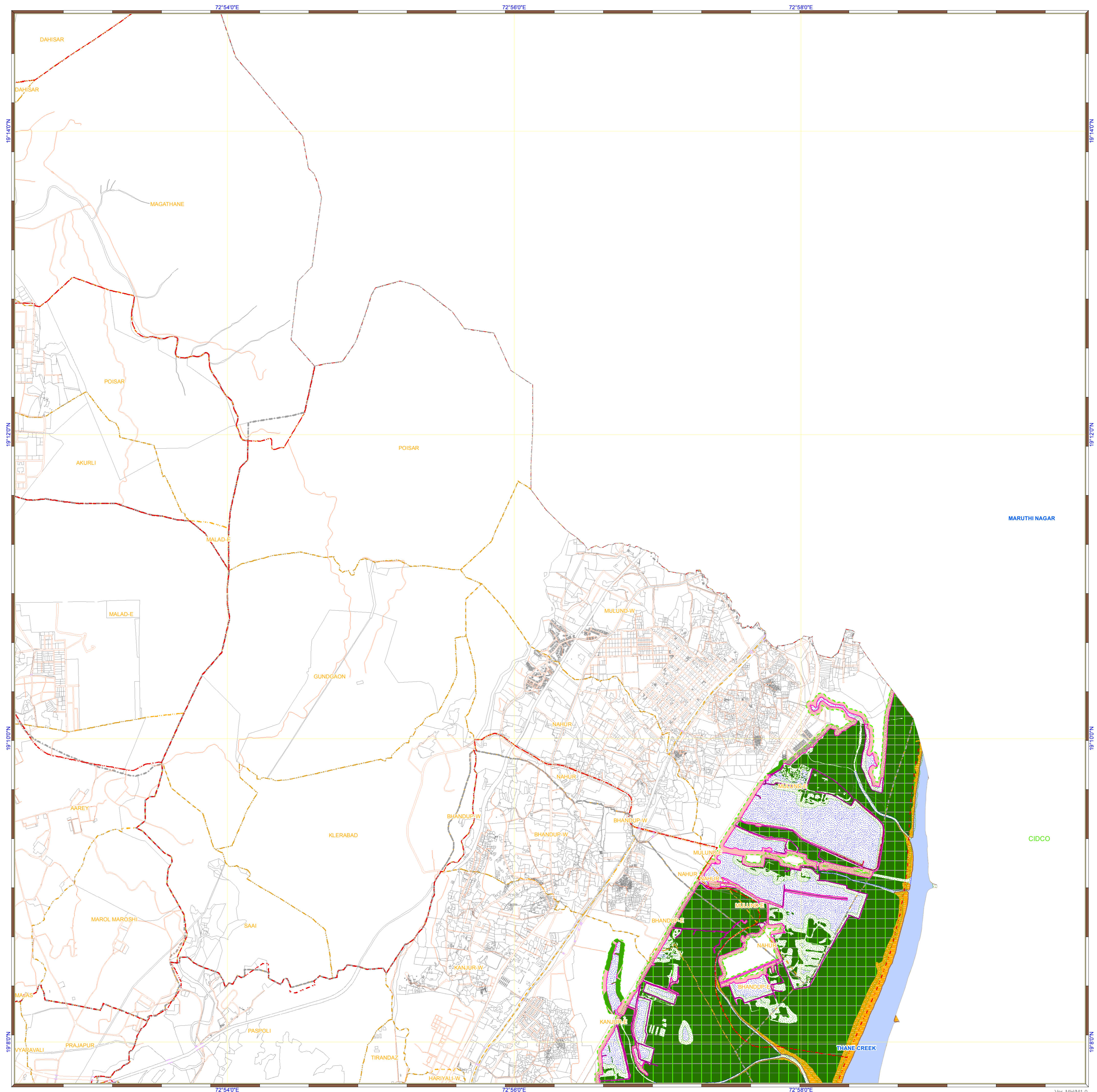
- CRZ landward of HTL - CRZ II

CRZ - III

- * NDZ - Within CRZ II
- * NDZ - Within CRZ II
- No Development Zone - NDZ
- 50 to 500m from HTL - CRZ IIIA

CRZ - IV

- Waterbody - CRZ IVA
- Waterbody - CRZ IVB



National Centre for Sustainable Coastal Management
(Ministry of Environment, Forest & Climate Change)
Chennai - 25

Prepared for
MAHARASHTRA STATE COASTAL ZONE MANAGEMENT AUTHORITY

**DRAFT CZMP MAP PREPARED AS PER CRZ NOTIFICATION 2019
MAHARASHTRA STATE**

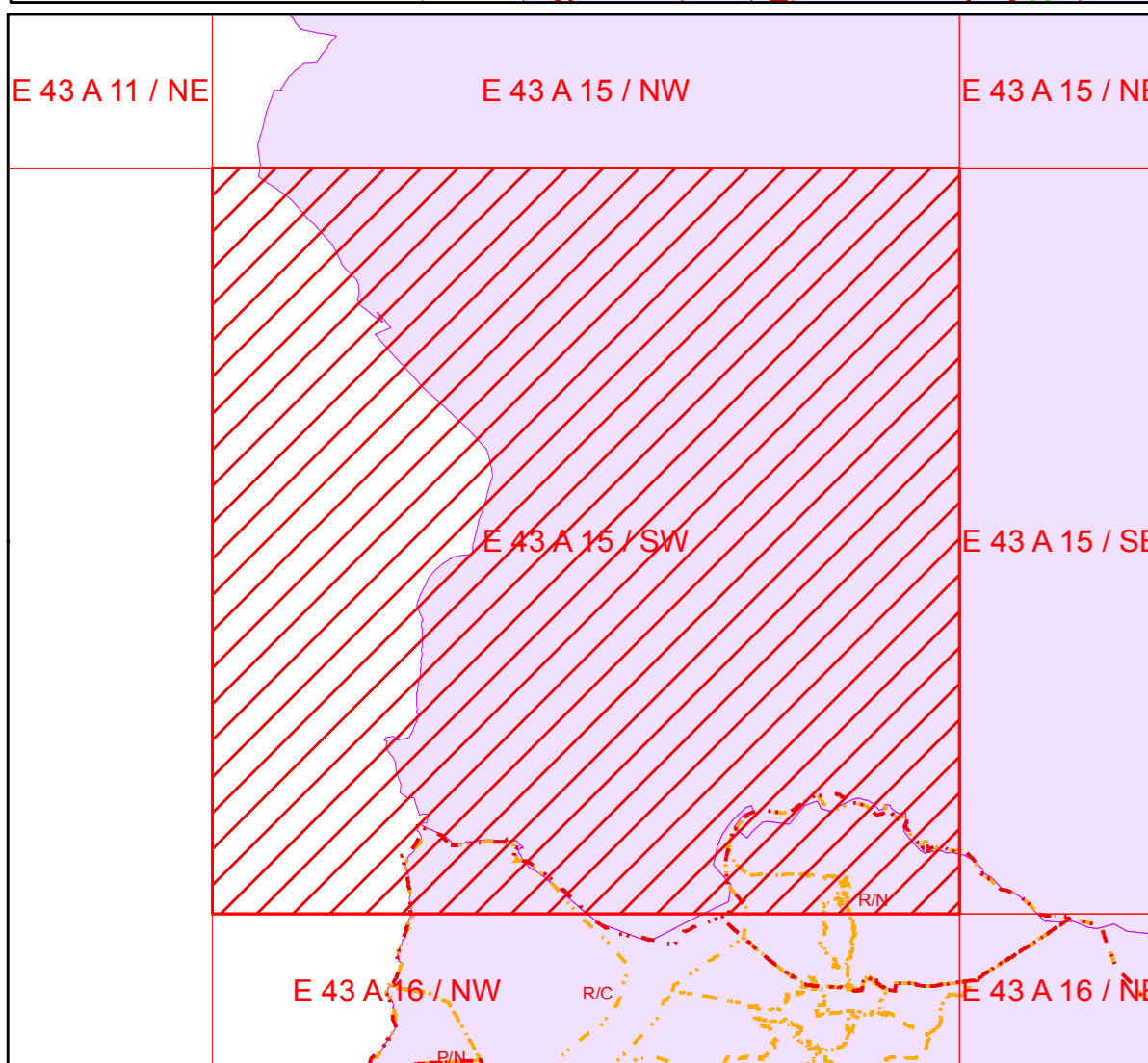
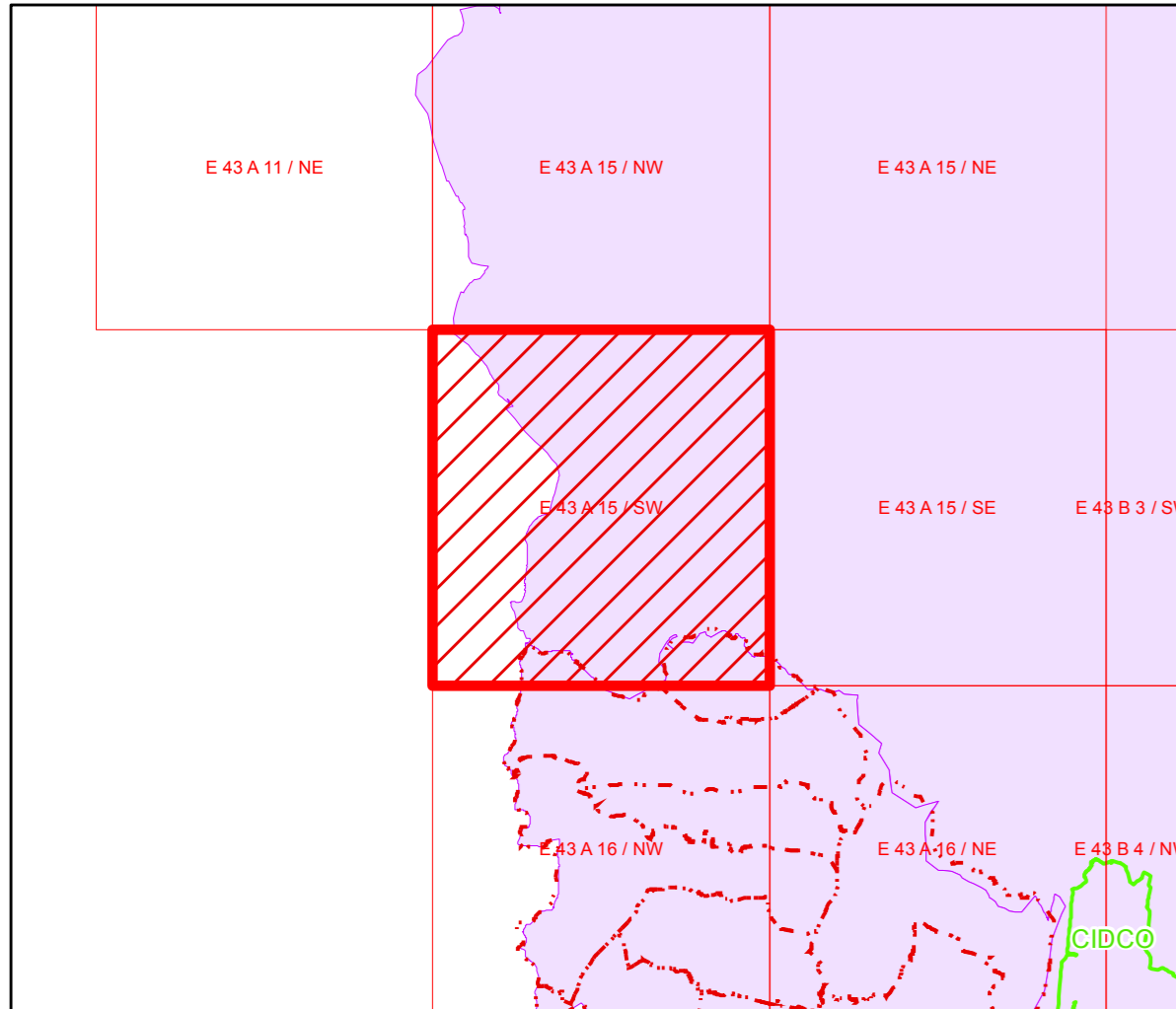
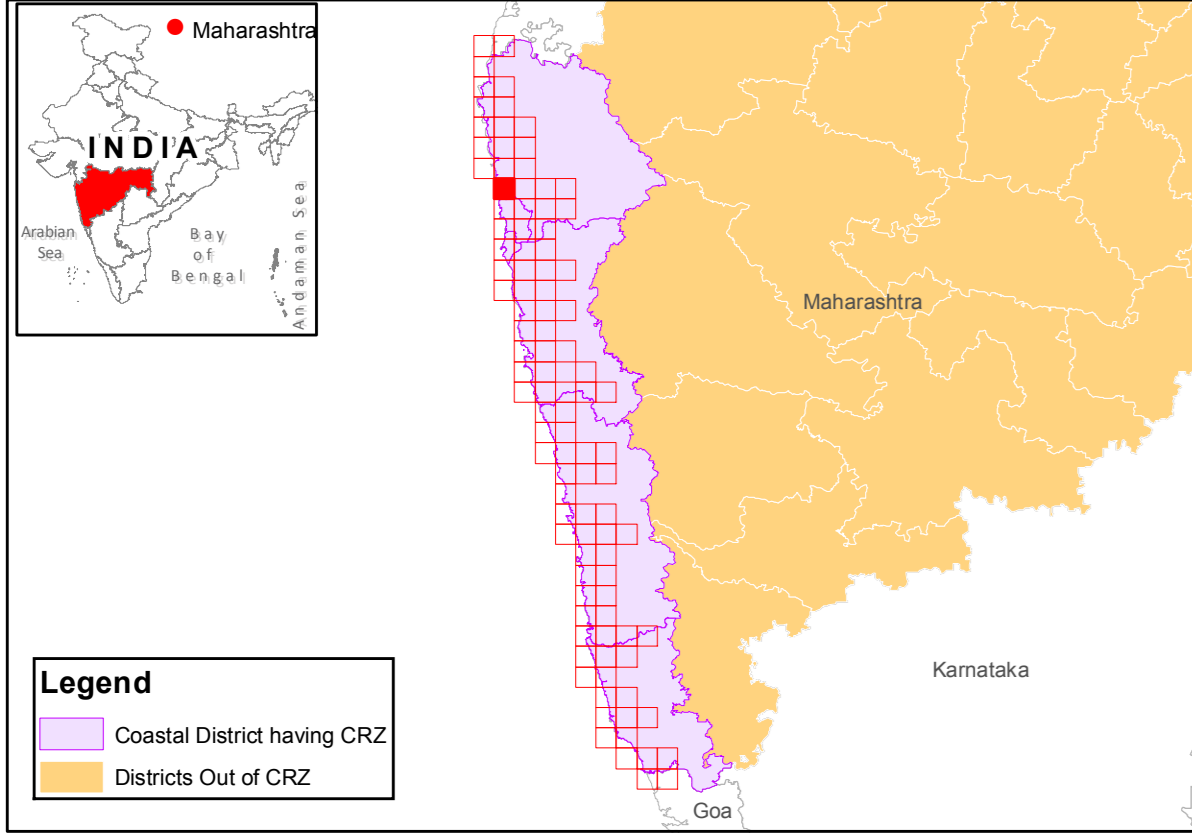
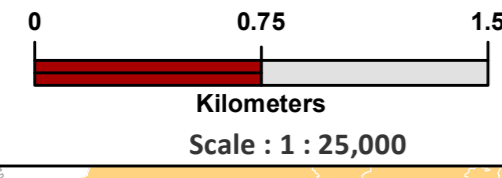
SHEET NO : E 43 A 15 / SW

Projection :- UTM Datum :- WGS 1984

NOTE:

* Open space as per Greater Mumbai Development Plan - 2034 the "Tank/Pond/Lake, Promenade, Play Ground, Garden/Park, Recreation Ground" Considered as NDZ within CRZ II

** EP proposal which are part of CRZ buffer will be as per the final Sanction by State Govt. and its development will be as per Clause 5.2 (iii) & 10.3 (i) of CRZ Notification 2019 as applicable.



Legend
Data Provided: MCZMA

- Roads
- Railway Line
- Ferry
- Bridge
- Sluice
- Ward Boundary
- Municipal or Corporation Boundary
- Survey Plots
- Taluk Boundary
- Village Boundary

Data Source: NCSCM

- ⊗ Lighthouse
- High Tide Line
- Low Tide Line
- Bund
- Seawall
- Jetty or Breakwater

CRZ lines

- 20m NDZ Line for Islands
- 50m CRZ Line - NDZ
- 50m CRZ line for Bay
- CRZ line for River or Creek
- 500m CRZ line

CRZ CATEGORY
CRZ - I

- Archaeological & Heritage Sites - CRZ IA
- Mangroves - CRZ IA
- 50m Mangrove buffer zone - CRZ IA
- Mudflats - CRZ IA
- Salt Marsh - CRZ IA
- Sand Dunes - CRZ IA
- Reserve Forests - CRZ IA
- Marine Protected Area - CRZ IA
- Nesting Grounds of Birds - CRZ IA
- Corals and Coral Reefs - CRZ IA
- Turtle Nesting Grounds - CRZ IA
- Intertidal Zone - CRZ IB
- Beach - CRZ IB
- Rock Outcrop - CRZ IB

CRZ - II

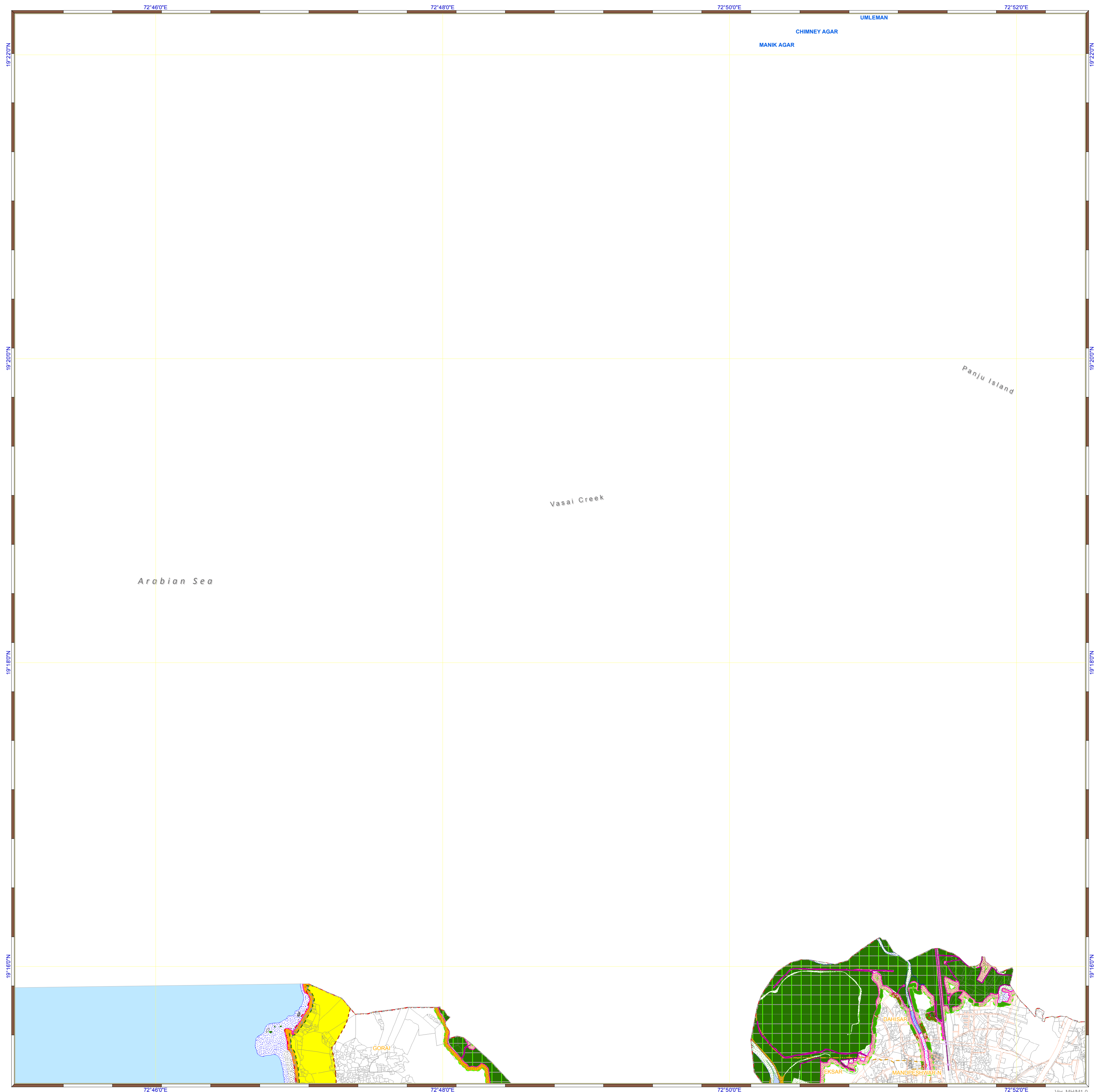
- CRZ landward of HTL - CRZ II

CRZ - III

- * NDZ - Within CRZ II
- * NDZ - Within CRZ II
- No Development Zone - NDZ
- 50 to 500m from HTL - CRZ IIIA

CRZ - IV

- Waterbody - CRZ IVA
- Waterbody - CRZ IVB



National Centre for Sustainable Coastal Management
(Ministry of Environment, Forest & Climate Change)
Chennai - 25

Prepared for
MAHARASHTRA STATE COASTAL ZONE MANAGEMENT AUTHORITY